



Iowa Mississippi River Parkway Commission
**IOWA GREAT RIVER ROAD
 DESIGNATED ROUTE UPDATE**

DUBUQUE COUNTY MAP SET

September 25, 2014



Prepared by:



DAVID L. DAHLQUIST ASSOCIATES, LLC



The 2015 Corridor Management Plan Library for the Iowa Great River Road
 A comprehensive collection of data, research findings, reports, maps, and presentations which provide additional detail and support for the 2015 Corridor Management Plan of the Iowa Great River Road. Each document is referenced with a lettered icon and title. Document files can be downloaded at www.iowadot.gov/iowasbyways/IAGRR-CMP.html and www.ddaforum.com/DocumentLibrary.aspx.



Iowa Great River Road Designated Route Update

Map atlases for the ten Iowa Great River Road counties illustrating the routing of the Byway.



Summary Report of Representative Intrinsic Qualities and Resources, Tabulation and Map Sets

Report, tabulations and map county atlases of the intrinsic resources of the Iowa Great River Road.



Condition of the Road Report

A review of the existing conditions associated with the Iowa Great Road using 14 key topics recommended by the Federal Highway Administration.



Iowa Great River Road Route Traffic Data and Safety Report

A tabular presentation of traffic data and safety indicators for segments of the Iowa Great River Road prepared by the Iowa Department of Transportation.



Iowa Great River Road Document Library

An extensive listing of a wide variety of reference documents pertaining to the Mississippi River as well as the National and Iowa Great River Road.



Report of Spring 2012 Stakeholder Meetings

A complete report of the production, results, and public direction provided during the Spring 2012 Stakeholder Meetings.



The 2013 Iowa Great River Road Visitor Survey

Summary report, detailed result tabulation, and survey instrument for the 2013 Iowa Great River Road Visitor Survey.



The 2013 Iowa Great River Road Resident Survey

Summary report, detailed result tabulation, and survey instrument for the 2013 Iowa Great River Road Resident Survey.



Report of Spring 2014 Stakeholder Meetings

A complete report of the production, results, and public direction provided during the Spring 2014 Stakeholder Meetings.



Iowa Mississippi River Parkway Commission Stakeholder List

A tabular presentation of the contact listing for the Iowa Mississippi River Parkway Commission current as of January 2015. (Available upon request to the Commission)



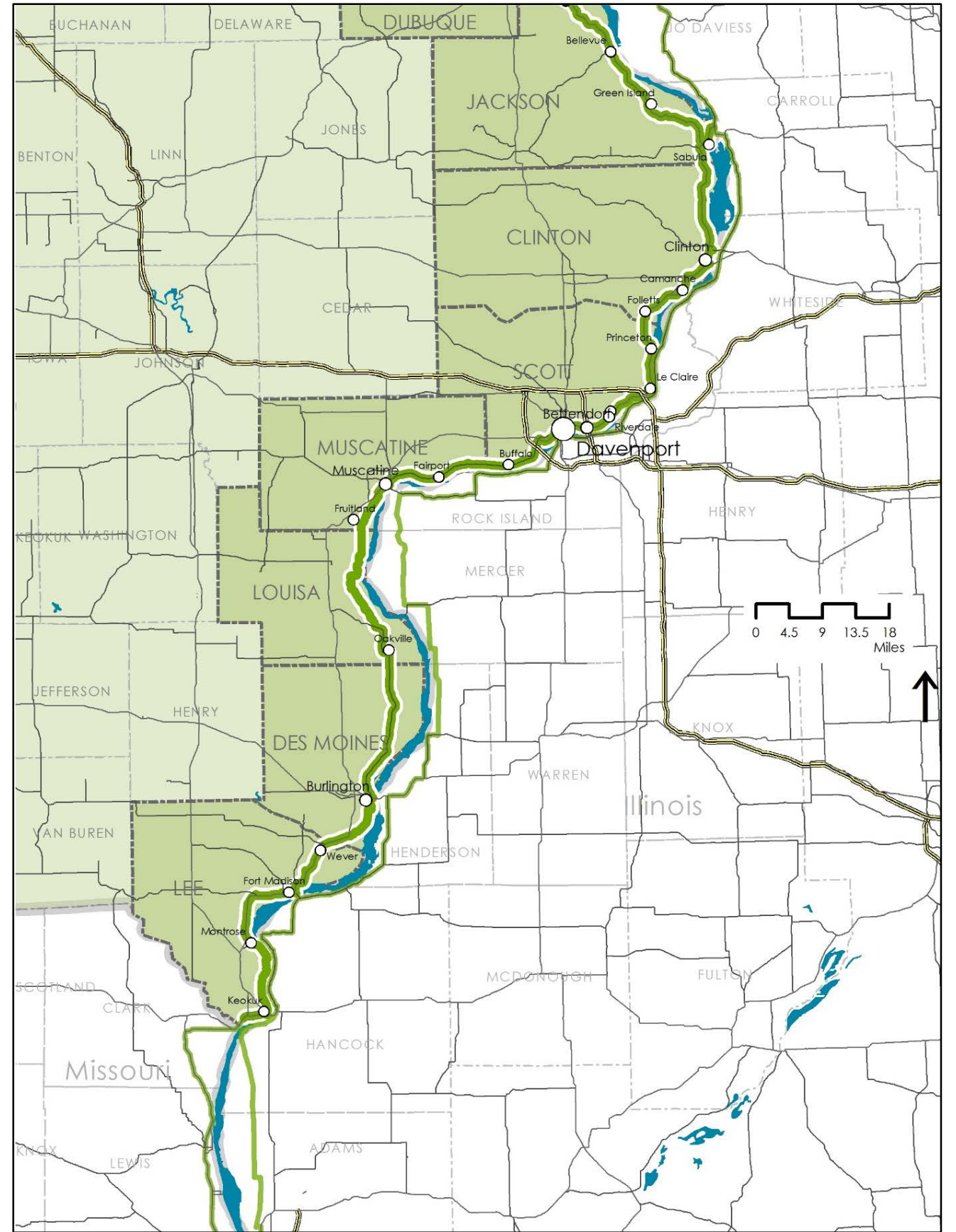
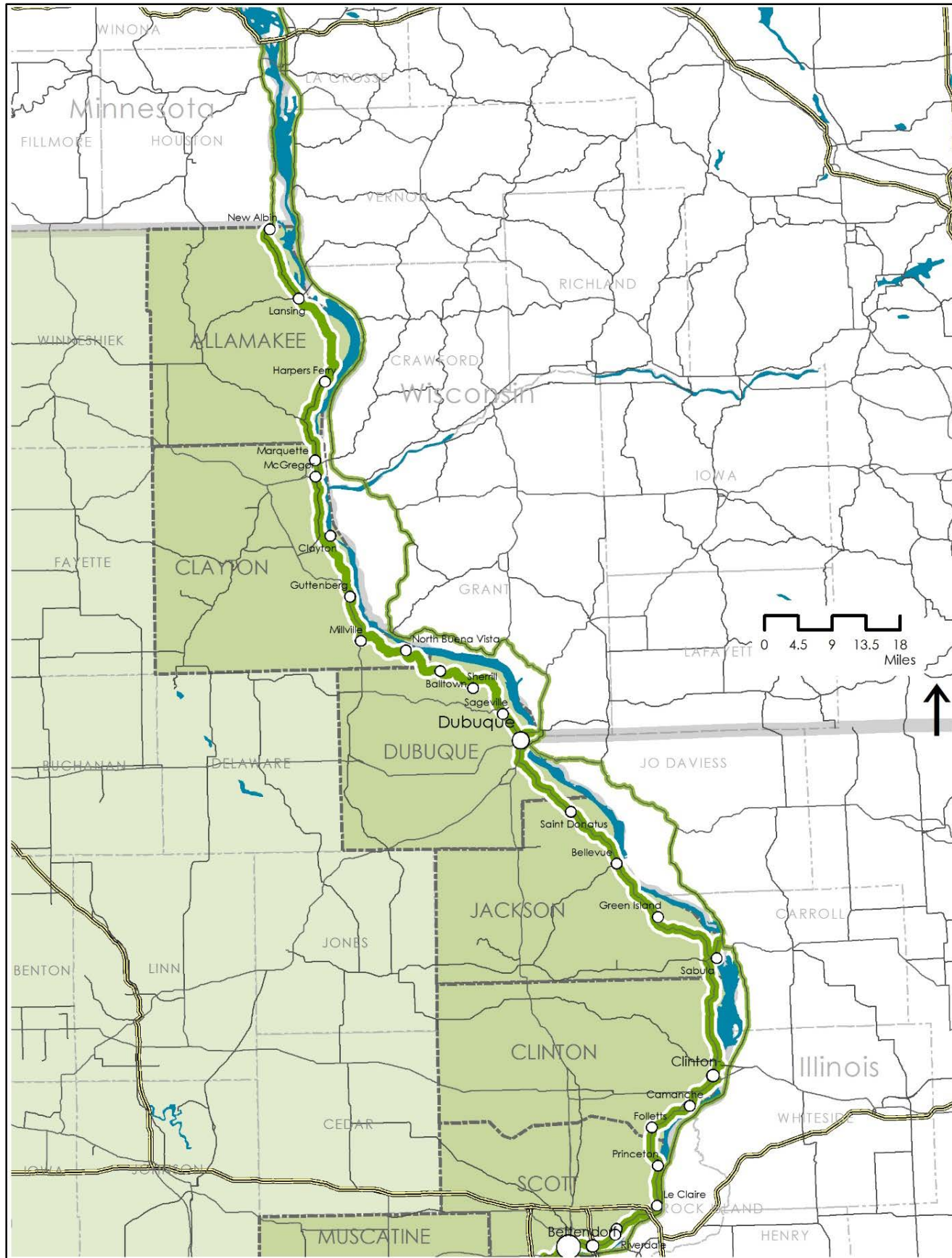
Core Management Directions, Actions, and Financial Considerations

Detailed background and descriptions of Actions and financial considerations supporting the Core Management Directions of the Iowa Great River Road.



Great River Road Interpretive Plan and Tool Kit

A comprehensive guide for themes and stories for interpreting the entire Great River Road.



August 25, 2014
 Revised: September 16, 2014
 Revised: September 25, 2014

Iowa Great River Road

Prepared by: David L. Dahlquist Associates
 Draft for review purposes only

Recommended Extensions and Realignments for the Official Designated Route

Allamakee County			
Extensions:	ID Code	Map Page	Description
	AL-01	AL 5 of 16	In Lansing, extend route from IA 26 (IA GRR) east to state border via IA 9.
Realignments:			
No Realignments Recommended			

Clayton County			
Extensions:	ID Code	Map Page	Description
	CY-01	CY 2 of 19	In Marquette, extend route from IA 76 (IA GRR) east to state border via US 18 and connecting ramps.
Realignments:	ID Code	Map Page	Description
	CY-01	CY 11 of 19	In Guttenberg, realign IA GRR route from the intersection of Broadway Street and N 3rd Street (IA GRR) to travel east on Broadway Street to its intersection with River Park Drive then south on River Park Drive to its intersection with Hayden Street (IA GRR). This realignment would provided travelers with extended visibility of the Mississippi River.
	CY-02	CY 18 of 19	In the vicinity of North Buena Vista, realign the route to continue on Great River Road (C9Y) and not use Snake Street and Walnut Street.
	CY-03	CY 12 of 19	In Guttenberg, realign IA GRR route from the intersection of River Park Drive and Schiller Street (IA GRR) to travel south on River Park Drive to its intersection with Koerner Street then west on Koerner Street to its intersection with US 52 (IA GRR). This realignment would provided travelers with extended visibility of the Mississippi River and direct access to the Guttenberg Municipal Marina--A project funded in part by a NSBP grant.

Dubuque County			
Extensions:	ID Code	Map Page	Description
	DU-01	DU 11 and 12 of 17	In Dubuque, extend route from intersections of US 61 with East 9th Street and East 11th Street (IA GRR) northeast to state border via US 61.
	DU-02	DU 11 of 17	In Dubuque, extend route from US 61, US 52, AND US 151 (IA GRR) east to state border via US 20 and its connecting streets.
Realignments:			
No Realignments Recommended			

Jackson County			
Extensions:	ID Code	Map Page	Description
	JA-01	JA 17 and 18 of 19	In and near Sabula, extend route from intersection of US 52 and IA 64 (IA GRR) east and north to state border via US 52 and IA 64.
Realignments:			
No Realignments Recommended			

Clinton County			
Extensions:	ID Code	Map Page	Description
	CL-01	CL 6 of 13	In Clinton, extend route from intersection of US 67 and IA 136 (IA GRR) east to state border via IA 136.
	CL-02	CL 7 of 13	In Clinton, extend route from intersection of US 67 and US 30 (IA GRR) east to state border via US 30.
Realignments:	ID Code	Map Page	Description

	CL-01	CL 10 of 13	In Comanche, realign IA GRR route existing now on US 67 to Washington Boulevard.
--	-------	-------------	--

Scott County			
Extensions:	ID Code	Map Page	Description
	SC-01	SC 6 of 21	In Le Claire, extend route from interchange of US 67 and I-80 (IA GRR) south to state border via I-80 and associated exit and entrance ramps.
	SC-02	SC 11 of 21	In Bettendorf, extend route from interchange of US 67 (Grant and State Streets) and I-74 (IA GRR) south to state border via I-74 and associated exit and entrance ramps.
	SC-03	SC 14 of 21	In Davenport, extend route from intersections of US 67 and US 61 Bus (Western Avenue and West River Drive) (IA GRR) and the intersection of Brown Street and West River Drive (IA GRR) south to state border via US 67 (Centennial Bridge) and associated exit and entrance ramps.
	SC-04	SC 13 of 21	In Davenport, extend route from intersection of US 67 and Iowa Street, then north on Iowa Street to the intersection of Iowa Street and E. 2nd Street. Then east on E. 2nd Street to the Arsenal Bridge continuing south across Arsenal Bridge to state border.
Realignments:			
No Realignments Recommended			

Muscatine County			
Extensions:	ID Code	Map Page	Description
	MU-01	MU 9 of 12	In Muscatine, extend route from Intersection of IA 92 and IA 30 (IA GRR) southeast to state border via IA 90.
Realignments:			
No Realignments Recommended			

Louisa County			
Extensions:	ID Code	Map Page	Description
No Extensions Recommended			
Realignments:			
No Realignments Recommended			

Des Moines County			
Extensions:	ID Code	Map Page	Description
	DM-01	DM 10 of 15	In Burlington, extend route from North Main Street and X99 (IA GRR) east to state border via US 34.
Realignments:	ID Code	Map Page	Description
	DM-01	DM 11 of 15	To address the long term closure of the South Main Street bridge in Dankward Memorial Park, a realignment is recommended from the intersection of Madison Avenue and South Main Drive (IA GRR) north along Madison Avenue to the intersection of Madison Avenue and Harrison Avenue, then east on Harrison Avenue to the intersection of Harrison Avenue and South Main Street where the proposed realignment would join the existing designated route of the IA GRR. When the South Main Street bridge in the Park is reopened to vehicle traffic, designating the Park route can be considered.

Lee County			
Extensions:	ID Code	Map Page	Description
	LE-01	LE 4 of 18	In Fort Madison, extend route from US 61 (IA GRR) southeast to state border via IA 2
	LE-02	LE 16 of 18	In Keokuk, extend route from intersection of N 4th Street and Main Street (IA GRR) southeast to state border via US 136
Realignments:			
No Realignments Recommended			



Iowa Great River Road National Scenic Byway

Designated Route Update

DAVID L. DAHLQUIST ASSOCIATES, LLC

Origin of geo-data: Iowa DOT, ESRI, Inc., and David L. Dahlquist Associates.

The opinions, findings, and conclusions expressed in this publication are those of the author and not necessarily those of the Iowa Department of Transportation or of the Federal Highway Administration.



Legend

- Existing Designated Routing for the Iowa Great River Road
- Recommended Extension of Iowa Great River Road to State Border
- Recommended Realignment of Iowa Great River Road Route

Note:

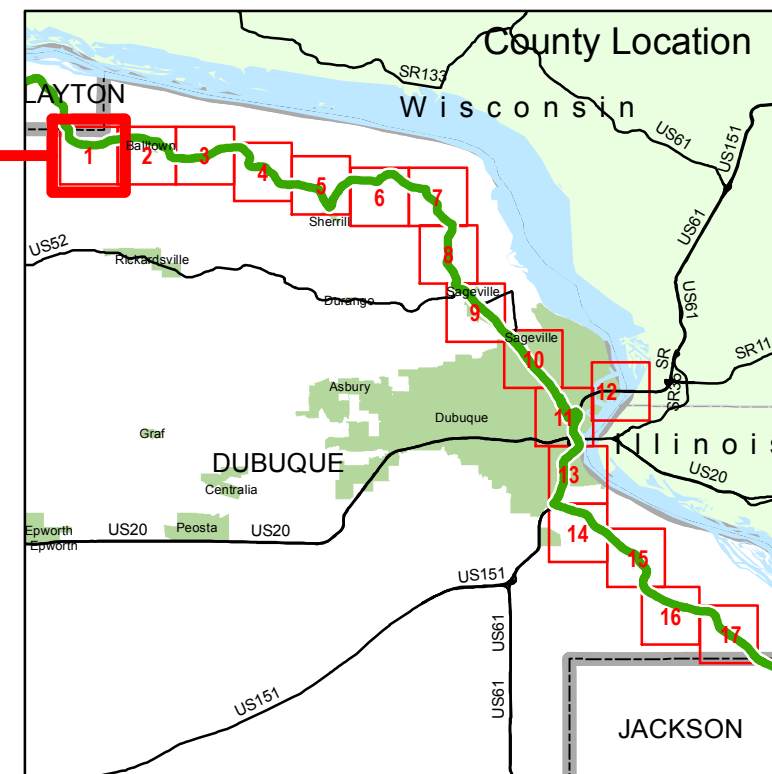
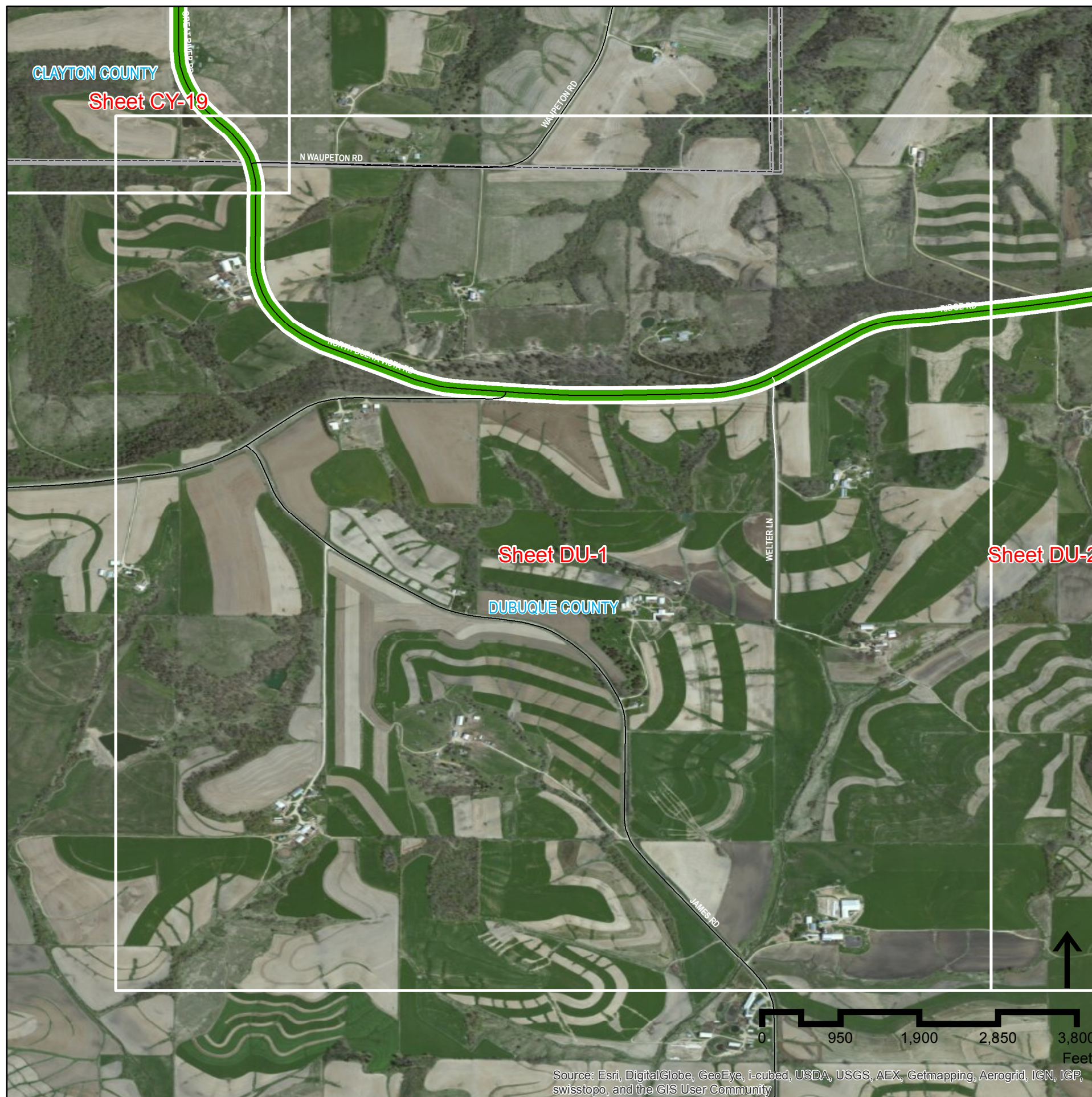
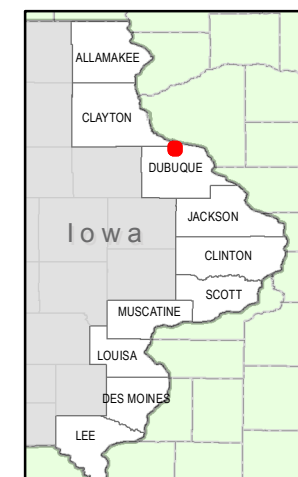
See IA GRR Route Extension and Realignment Report 08-25-14 for notes

County Abbreviations

- AL Allamakee
- CY Clayton
- DU Dubuque
- JA Jackson
- CL Clinton
- SC Scott
- MU Muscatine
- LO Louisa
- DM Des Moines
- LE Lee

This document issued on:
Tuesday, August 26, 2014
Field Review

State Location



Dubuque County
Sheet DU 1 of 17



Iowa Great River Road National Scenic Byway

Designated Route Update

DAVID L. DAHLQUIST ASSOCIATES, LLC

Origin of geo-data: Iowa DOT, ESRI, Inc., and David L. Dahlquist Associates.

The opinions, findings, and conclusions expressed in this publication are those of the author and not necessarily those of the Iowa Department of Transportation or of the Federal Highway Administration.



Legend

- Existing Designated Routing for the Iowa Great River Road
- Recommended Extension of Iowa Great River Road to State Border
- Recommended Realignment of Iowa Great River Road Route

Note:

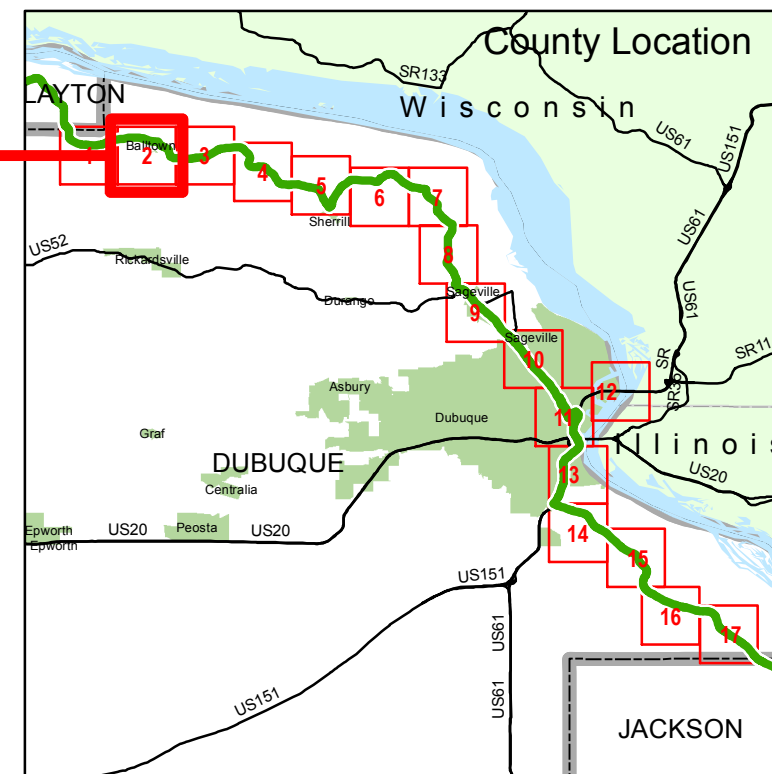
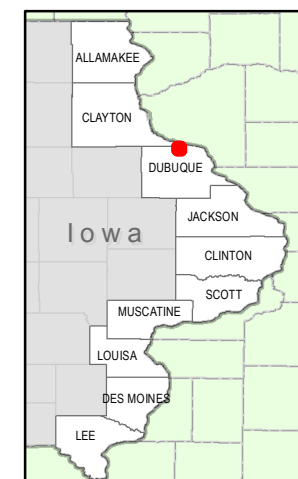
See IA GRR Route Extension and Realignment Report 08-25-14 for notes

County Abbreviations

- AL Allamakee
- CY Clayton
- DU Dubuque
- JA Jackson
- CL Clinton
- SC Scott
- MU Muscatine
- LO Louisa
- DM Des Moines
- LE Lee

This document issued on:
Tuesday, August 26, 2014
Field Review

State Location



Dubuque County
Sheet DU 2 of 17

Source: Esri, DigitalGlobe, GeoEye, i-cubed, USDA, USGS, AEX, Getmapping, Aerogrid, IGN, IGP, swisstopo, and the GIS User Community



Iowa Great River Road National Scenic Byway

Designated Route Update

DAVID L. DAHLQUIST ASSOCIATES, LLC

Origin of geo-data: Iowa DOT, ESRI, Inc., and David L. Dahlquist Associates.

The opinions, findings, and conclusions expressed in this publication are those of the author and not necessarily those of the Iowa Department of Transportation or of the Federal Highway Administration.



Legend

- Existing Designated Routing for the Iowa Great River Road
- Recommended Extension of Iowa Great River Road to State Border
- Recommended Realignment of Iowa Great River Road Route

Note:

See IA GRR Route Extension and Realignment Report 08-25-14 for notes

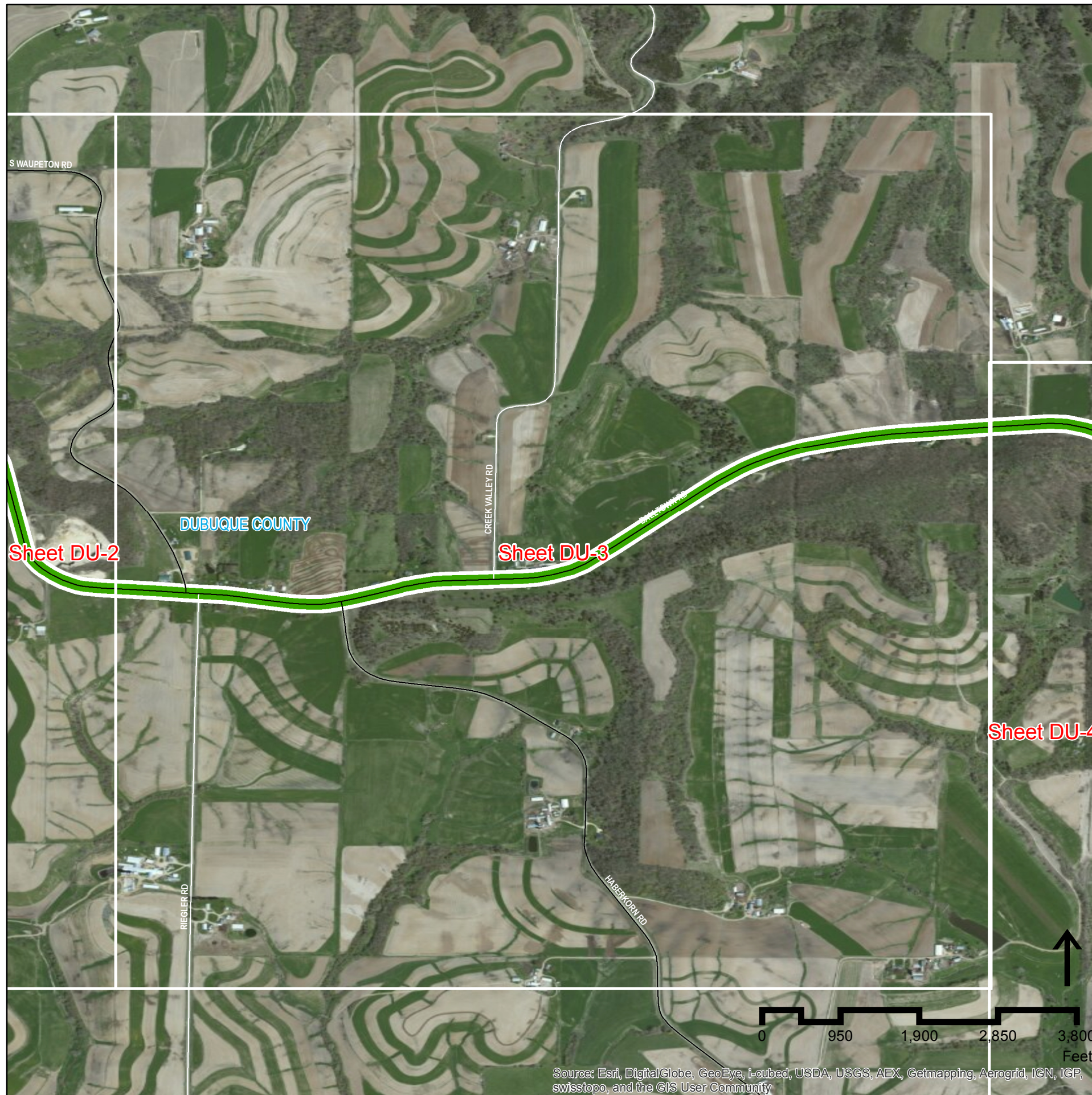
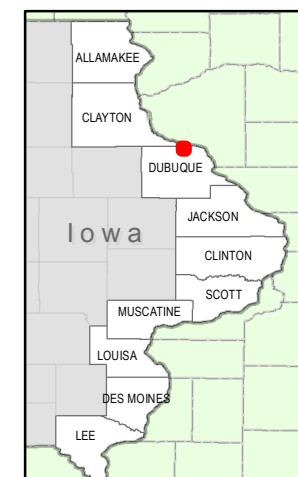
County Abbreviations

- AL Allamakee
- CY Clayton
- DU Dubuque
- JA Jackson
- CL Clinton
- SC Scott
- MU Muscatine
- LO Louisa
- DM Des Moines
- LE Lee

This document issued on: Tuesday, August 26, 2014

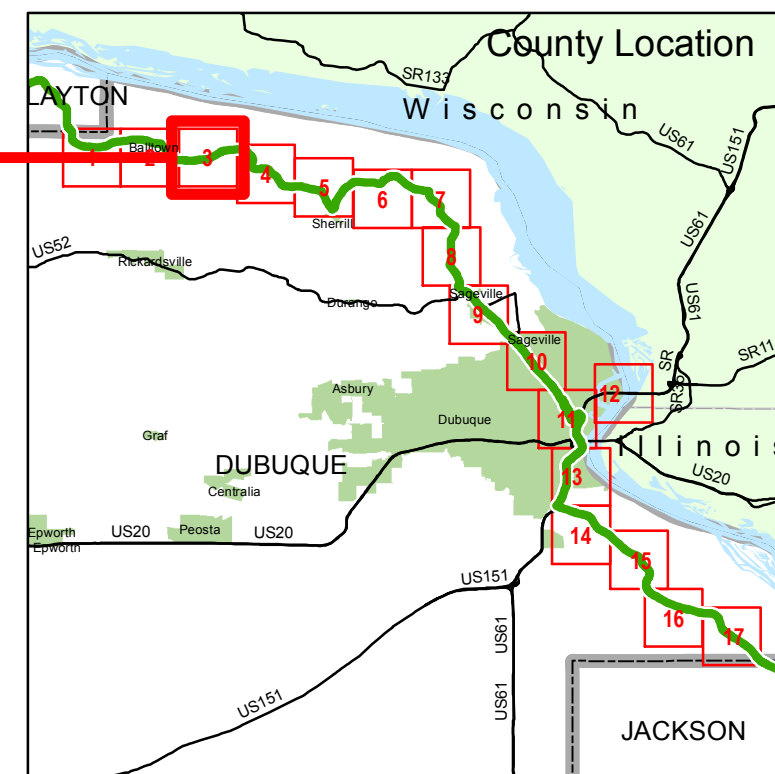
Field Review

State Location



Source: Esri, DigitalGlobe, GeoEye, i-cubed, USDA, USGS, AEX, Getmapping, Aerogrid, IGN, IGP, swisstopo, and the GIS User Community

County Location



Dubuque County Sheet DU 3 of 17



Iowa Great River Road National Scenic Byway

Designated Route Update

DAVID L. DAHLQUIST ASSOCIATES, LLC

Origin of geo-data: Iowa DOT, ESRI, Inc., and David L. Dahlquist Associates.

The opinions, findings, and conclusions expressed in this publication are those of the author and not necessarily those of the Iowa Department of Transportation or of the Federal Highway Administration.



Legend

- Existing Designated Routing for the Iowa Great River Road
- Recommended Extension of Iowa Great River Road to State Border
- Recommended Realignment of Iowa Great River Road Route

Note:

See IA GRR Route Extension and Realignment Report 08-25-14 for notes

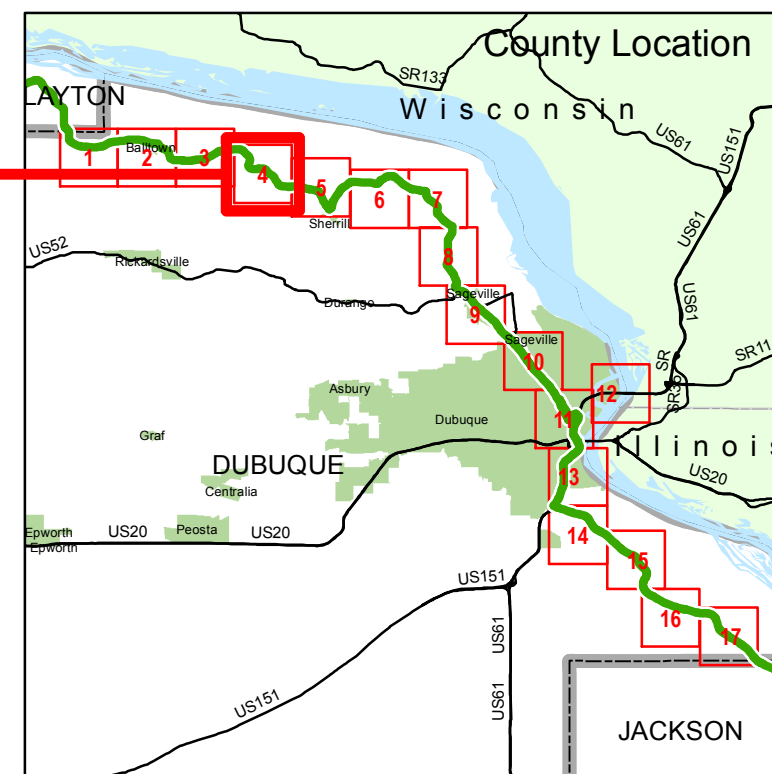
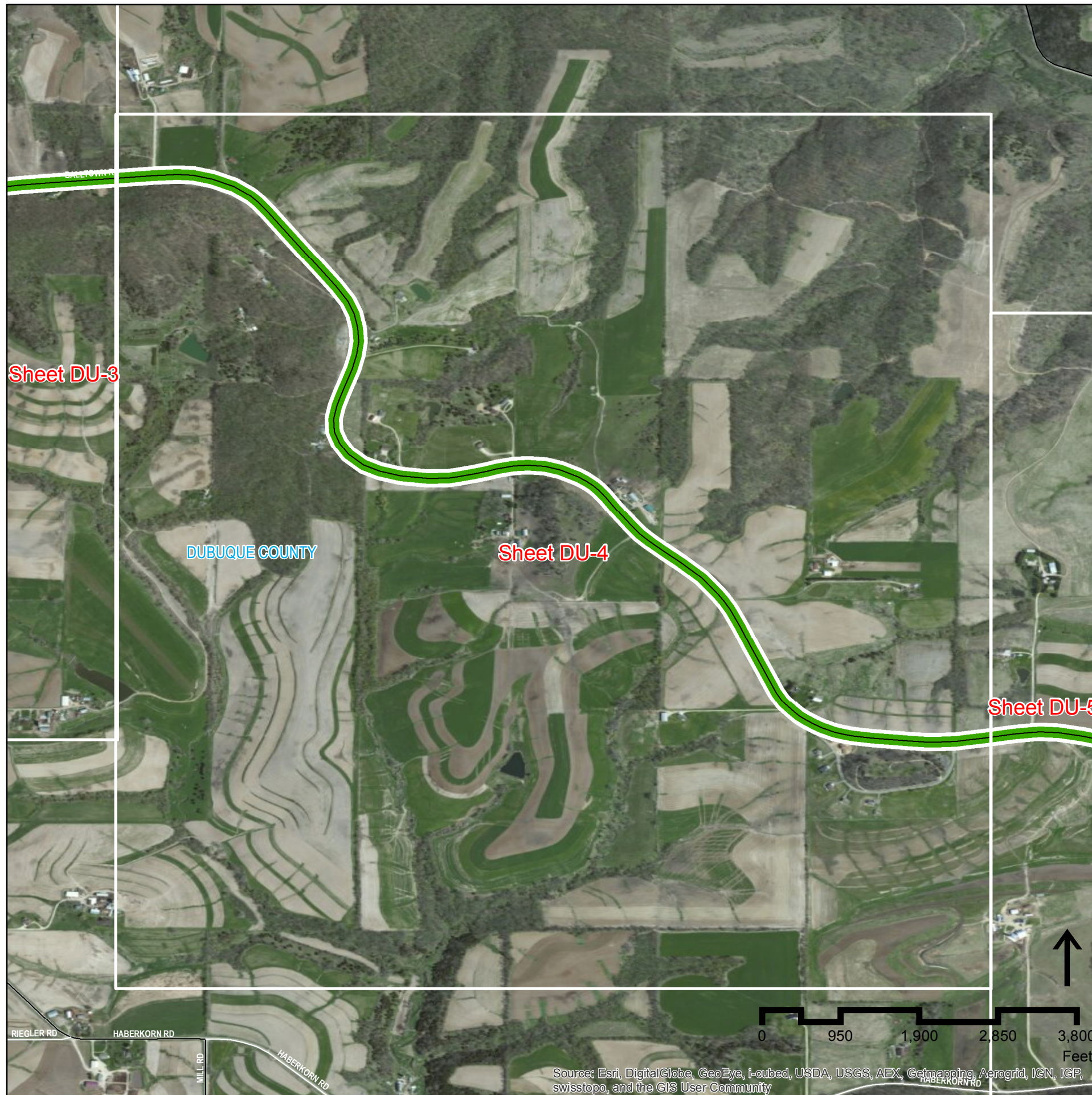
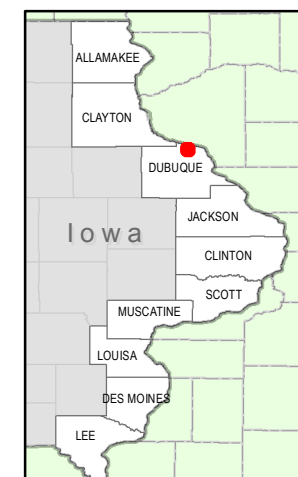
County Abbreviations

- AL Allamakee
- CY Clayton
- DU Dubuque
- JA Jackson
- CL Clinton
- SC Scott
- MU Muscatine
- LO Louisa
- DM Des Moines
- LE Lee

This document issued on: Tuesday, August 26, 2014

Field Review

State Location



Dubuque County Sheet DU 4 of 17



Iowa Great River Road National Scenic Byway

Designated Route Update

DAVID L. DAHLQUIST ASSOCIATES, LLC

Origin of geo-data: Iowa DOT, ESRI, Inc., and David L. Dahlquist Associates.

The opinions, findings, and conclusions expressed in this publication are those of the author and not necessarily those of the Iowa Department of Transportation or of the Federal Highway Administration.



Legend

- Existing Designated Routing for the Iowa Great River Road
- Recommended Extension of Iowa Great River Road to State Border
- Recommended Realignment of Iowa Great River Road Route

Note:

See IA GRR Route Extension and Realignment Report 08-25-14 for notes

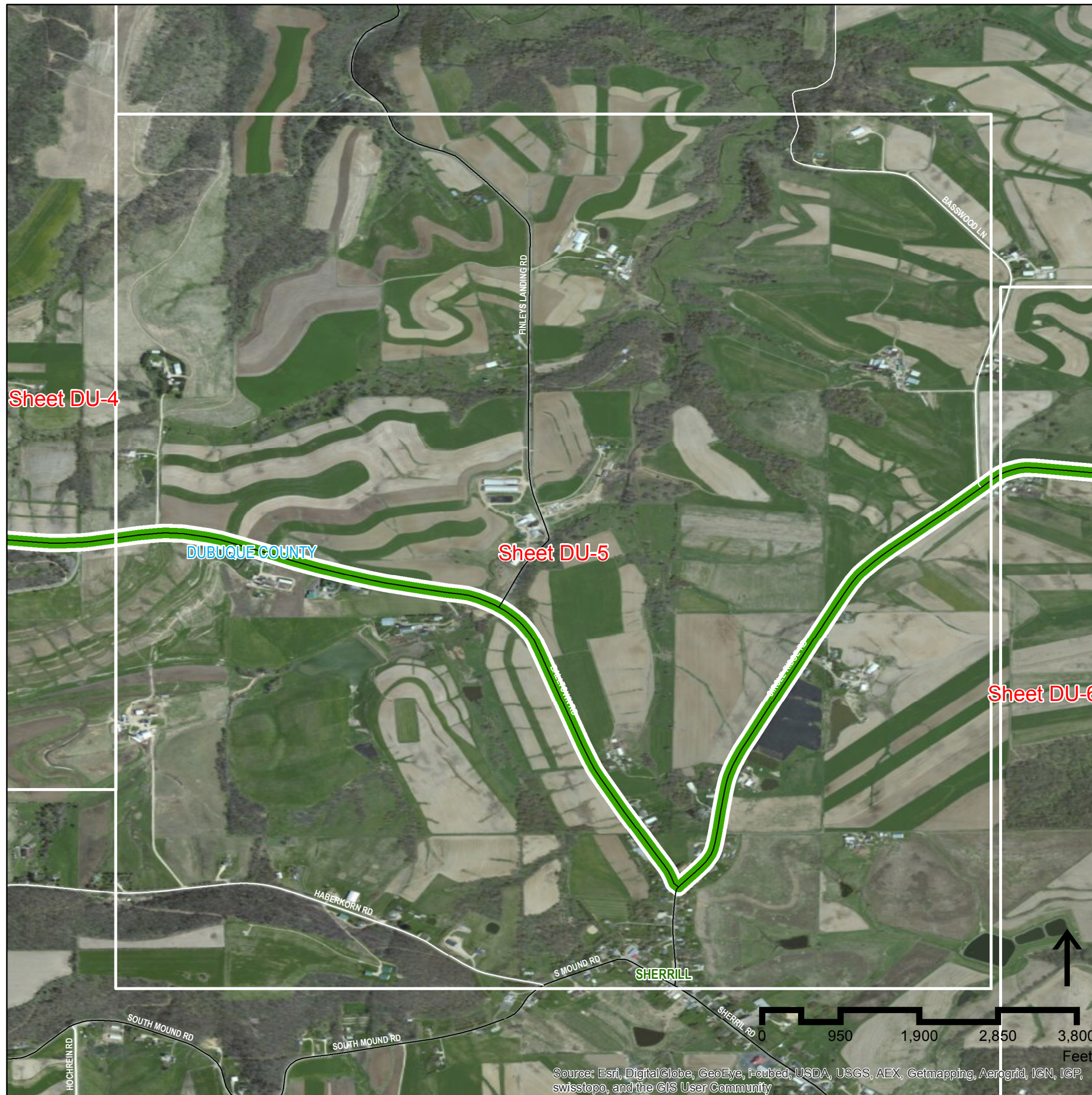
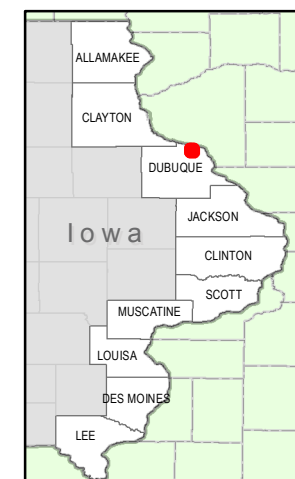
County Abbreviations

- AL Allamakee
- CY Clayton
- DU Dubuque
- JA Jackson
- CL Clinton
- SC Scott
- MU Muscatine
- LO Louisa
- DM Des Moines
- LE Lee

This document issued on: Tuesday, August 26, 2014

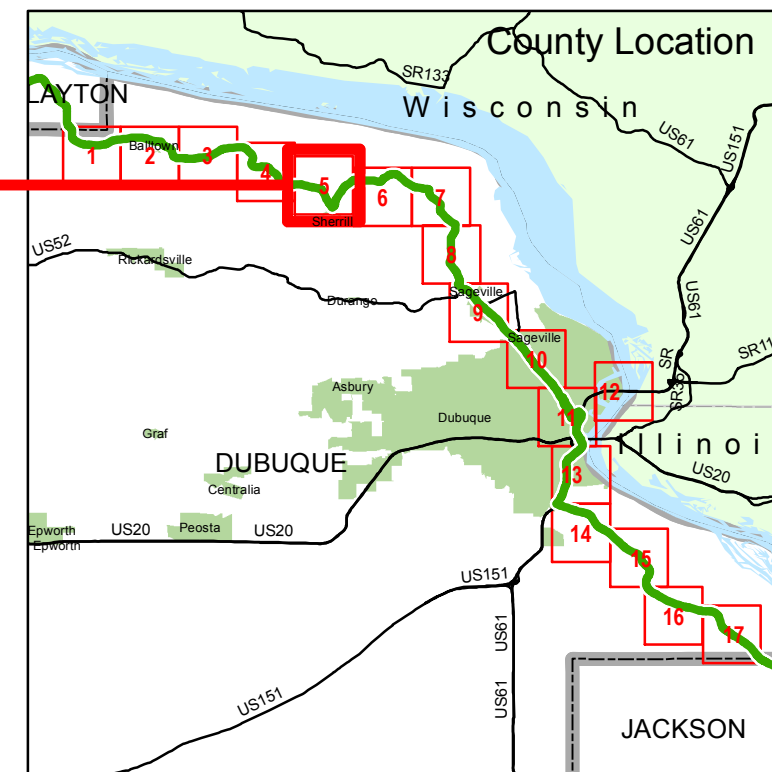
Field Review

State Location



Source: Esri, DigitalGlobe, GeoEye, i-cubed, USDA, USGS, AEX, Getmapping, Aerogrid, IGN, ICP, swisstopo, and the GIS User Community

County Location



Dubuque County Sheet DU 5 of 17



Iowa Great River Road National Scenic Byway

Designated Route Update

DAVID L. DAHLQUIST ASSOCIATES, LLC

Origin of geo-data: Iowa DOT, ESRI, Inc., and David L. Dahlquist Associates.

The opinions, findings, and conclusions expressed in this publication are those of the author and not necessarily those of the Iowa Department of Transportation or of the Federal Highway Administration.



Legend

- Existing Designated Routing for the Iowa Great River Road
- Recommended Extension of Iowa Great River Road to State Border
- Recommended Realignment of Iowa Great River Road Route

Note:

See IA GRR Route Extension and Realignment Report 08-25-14 for notes

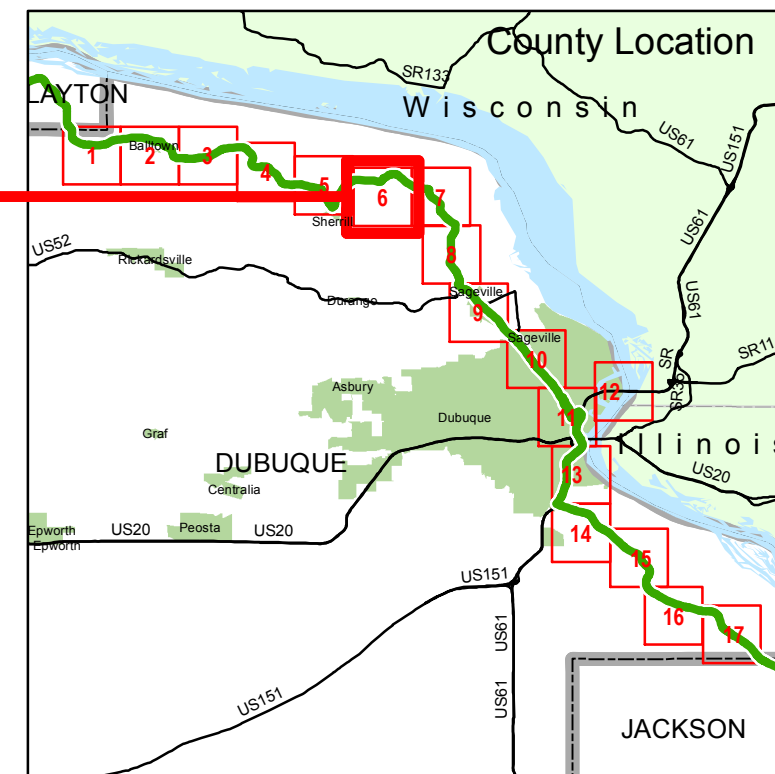
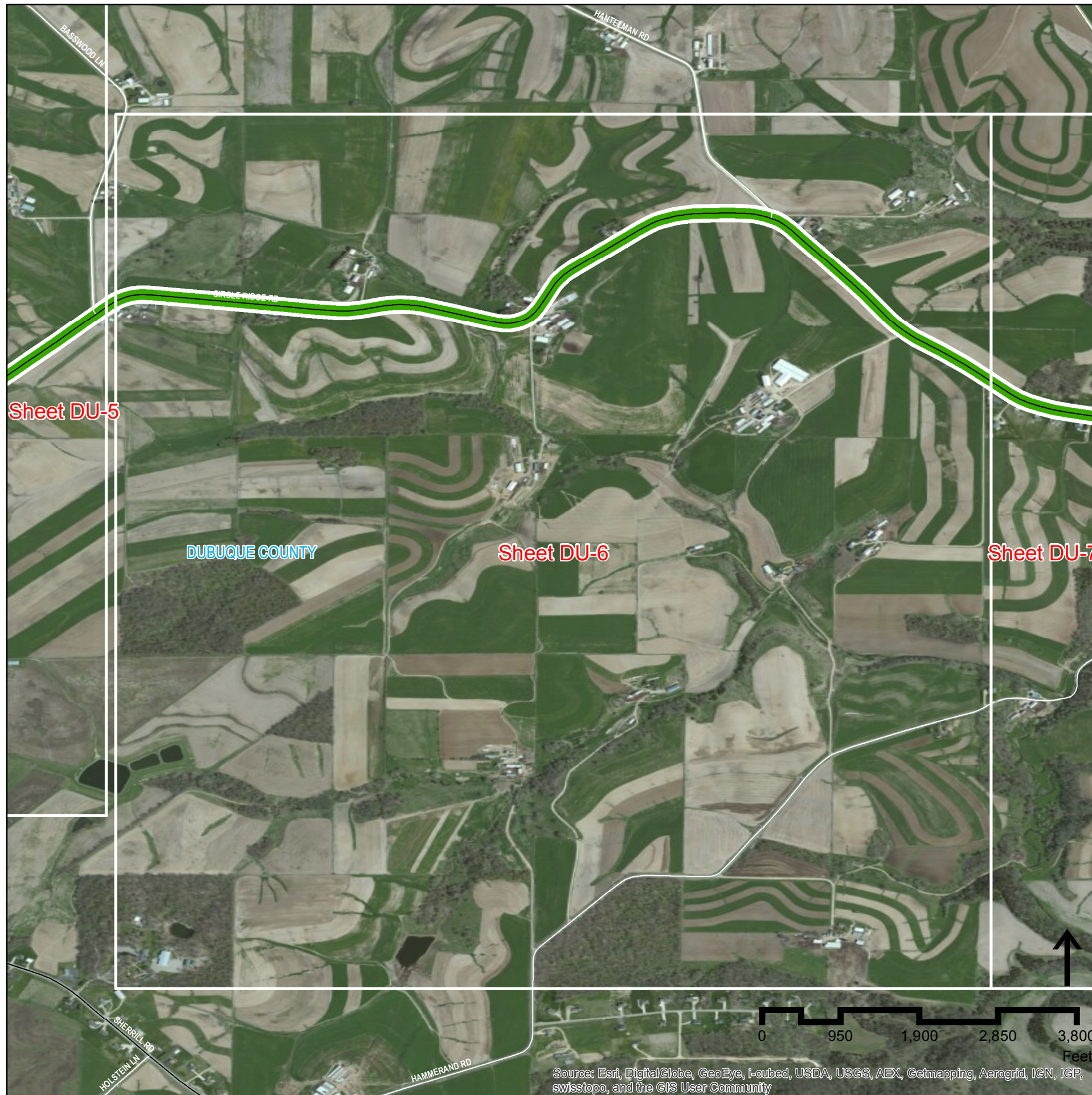
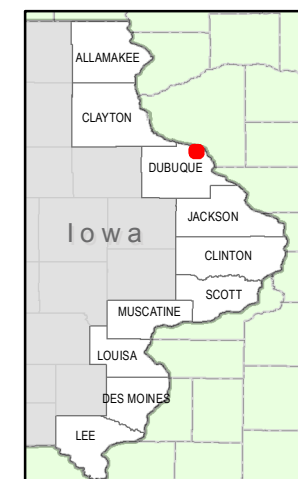
County Abbreviations

- AL Allamakee
- CY Clayton
- DU Dubuque
- JA Jackson
- CL Clinton
- SC Scott
- MU Muscatine
- LO Louisa
- DM Des Moines
- LE Lee

This document issued on: **Tuesday, August 26, 2014**

Field Review

State Location



Dubuque County Sheet DU 6 of 17

Source: Esri, DigitalGlobe, GeoEye, i-cubed, USDA, USGS, AEX, Getmapping, Aerogrid, IGN, IGP, swisstopo, and the GIS User Community



Iowa Great River Road National Scenic Byway

Designated Route Update

DAVID L. DAHLQUIST ASSOCIATES, LLC

Origin of geo-data: Iowa DOT, ESRI, Inc., and David L. Dahlquist Associates.

The opinions, findings, and conclusions expressed in this publication are those of the author and not necessarily those of the Iowa Department of Transportation or of the Federal Highway Administration.



Legend

-  Existing Designated Routing for the Iowa Great River Road
-  Recommended Extension of Iowa Great River Road to State Border
-  Recommended Realignment of Iowa Great River Road Route

Note:

See IA GRR Route Extension and Realignment Report 08-25-14 for notes

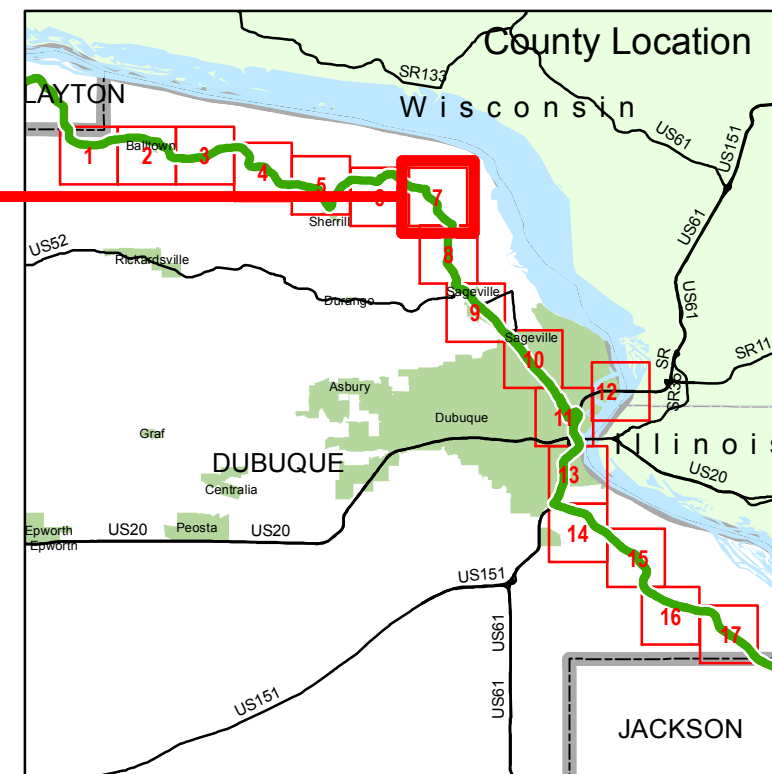
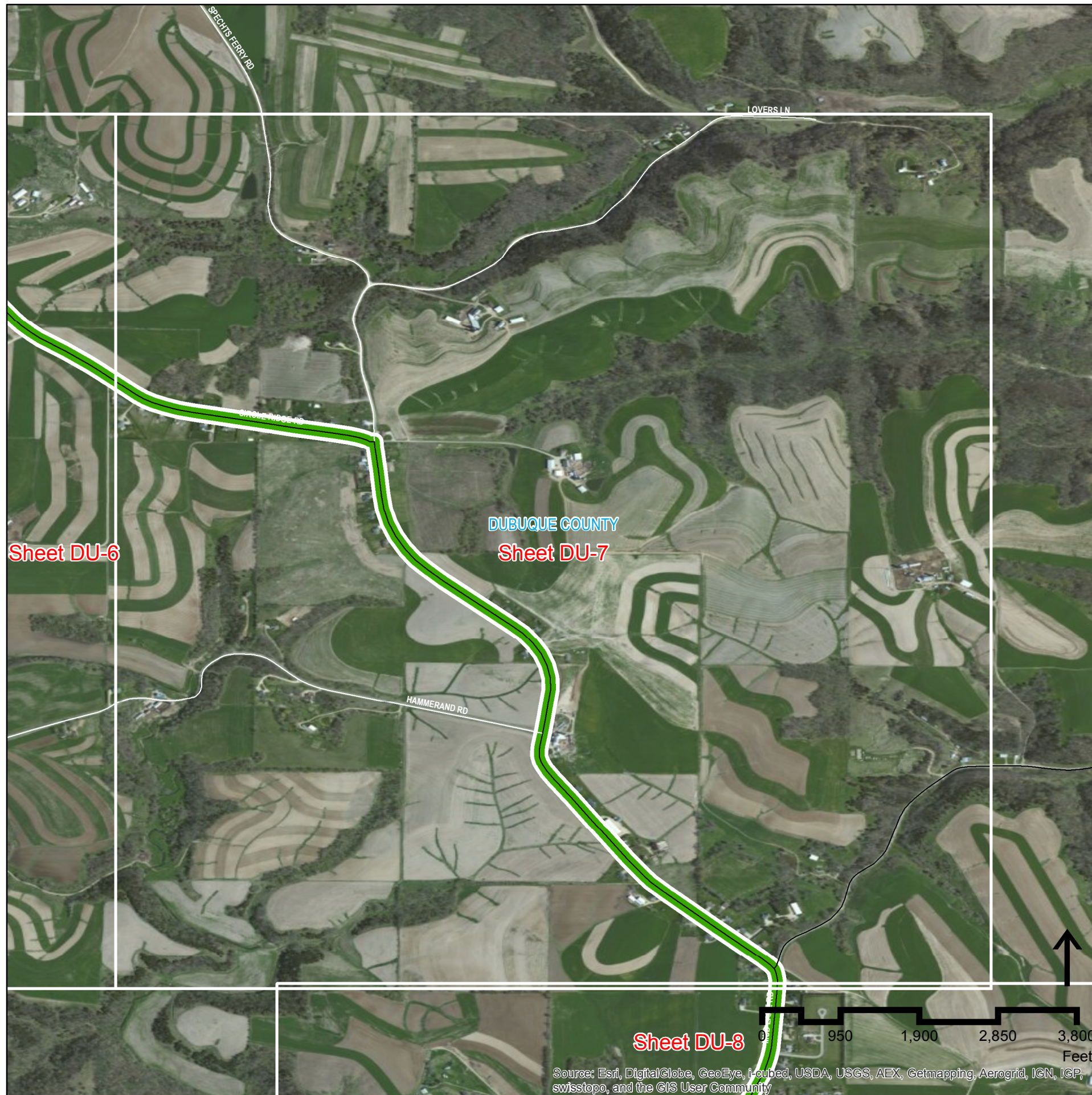
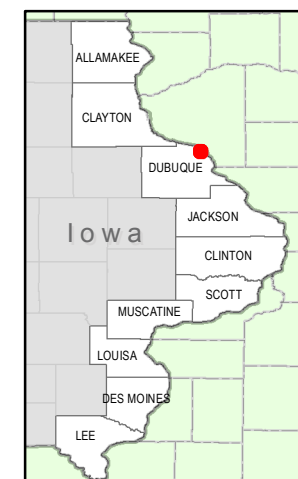
County Abbreviations

- AL Allamakee
- CY Clayton
- DU Dubuque
- JA Jackson
- CL Clinton
- SC Scott
- MU Muscatine
- LO Louisa
- DM Des Moines
- LE Lee

This document issued on:
Tuesday, August 26, 2014

Field Review

State Location



**Dubuque County
Sheet DU 7 of 17**

Source: Esri, DigitalGlobe, GeoEye, i-cubed, USDA, USGS, AEX, Getmapping, Aerogrid, IGN, IGP, swisstopo, and the GIS User Community



Iowa Great River Road National Scenic Byway

Designated Route Update

DAVID L. DAHLQUIST ASSOCIATES, LLC

Origin of geo-data: Iowa DOT, ESRI, Inc., and David L. Dahlquist Associates.

The opinions, findings, and conclusions expressed in this publication are those of the author and not necessarily those of the Iowa Department of Transportation or of the Federal Highway Administration.



Legend

-  Existing Designated Routing for the Iowa Great River Road
-  Recommended Extension of Iowa Great River Road to State Border
-  Recommended Realignment of Iowa Great River Road Route

Note:

See IA GRR Route Extension and Realignment Report 08-25-14 for notes

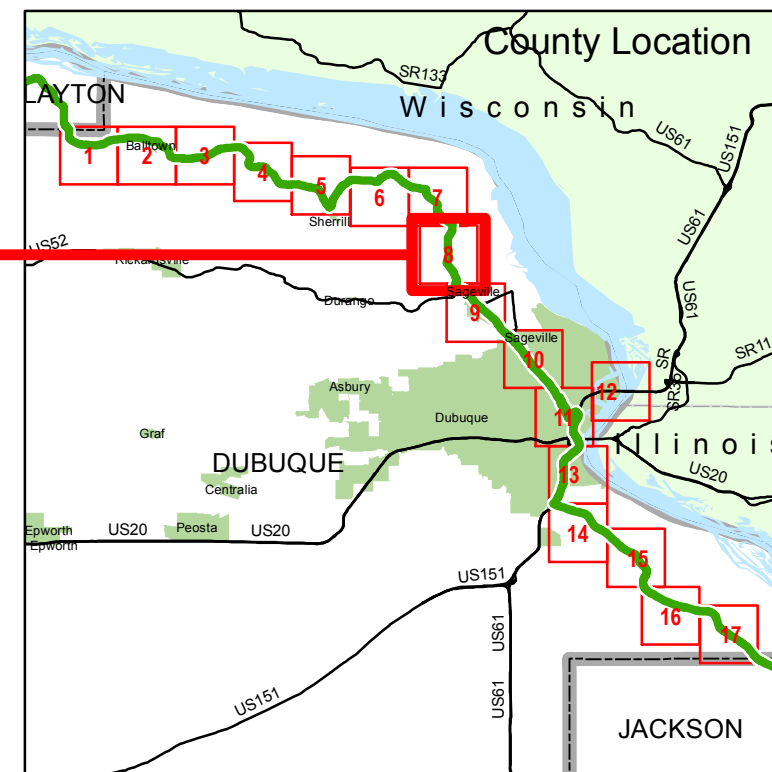
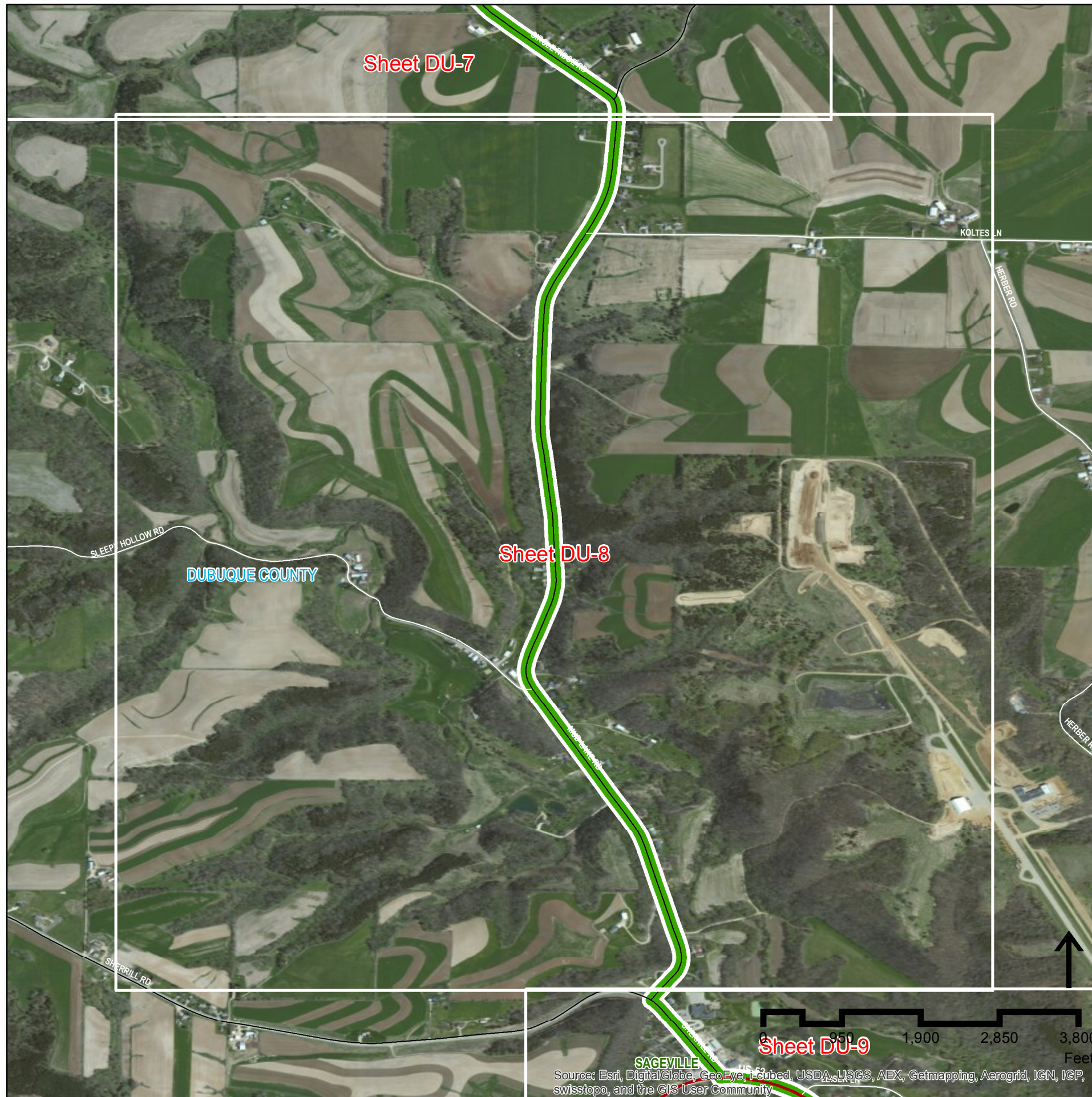
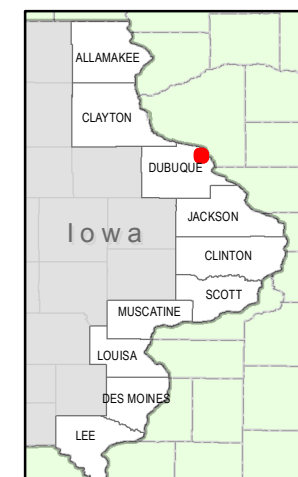
County Abbreviations

- AL Allamakee
- CY Clayton
- DU Dubuque
- JA Jackson
- CL Clinton
- SC Scott
- MU Muscatine
- LO Louisa
- DM Des Moines
- LE Lee

This document issued on:
Tuesday, August 26, 2014

Field Review

State Location



**Dubuque County
Sheet DU 8 of 17**

Source: Esri, DigitalGlobe, GeoEye, Earthstar, USDA, USGS, AEX, Getmapping, Aerogrid, IGN, ICP, swisstopo, and the GIS User Community



Iowa Great River Road National Scenic Byway

Designated Route Update

DAVID L. DAHLQUIST ASSOCIATES, LLC

Origin of geo-data: Iowa DOT, ESRI, Inc., and David L. Dahlquist Associates.

The opinions, findings, and conclusions expressed in this publication are those of the author and not necessarily those of the Iowa Department of Transportation or of the Federal Highway Administration.



Legend

- Existing Designated Routing for the Iowa Great River Road
- Recommended Extension of Iowa Great River Road to State Border
- Recommended Realignment of Iowa Great River Road Route

Note:

See IA GRR Route Extension and Realignment Report 08-25-14 for notes

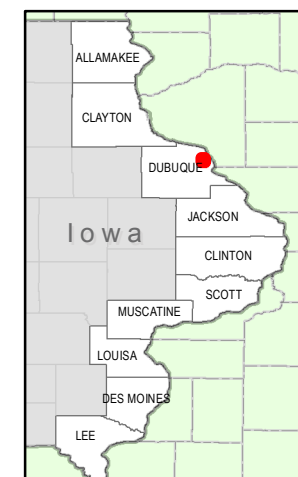
County Abbreviations

- AL Allamakee
- CY Clayton
- DU Dubuque
- JA Jackson
- CL Clinton
- SC Scott
- MU Muscatine
- LO Louisa
- DM Des Moines
- LE Lee

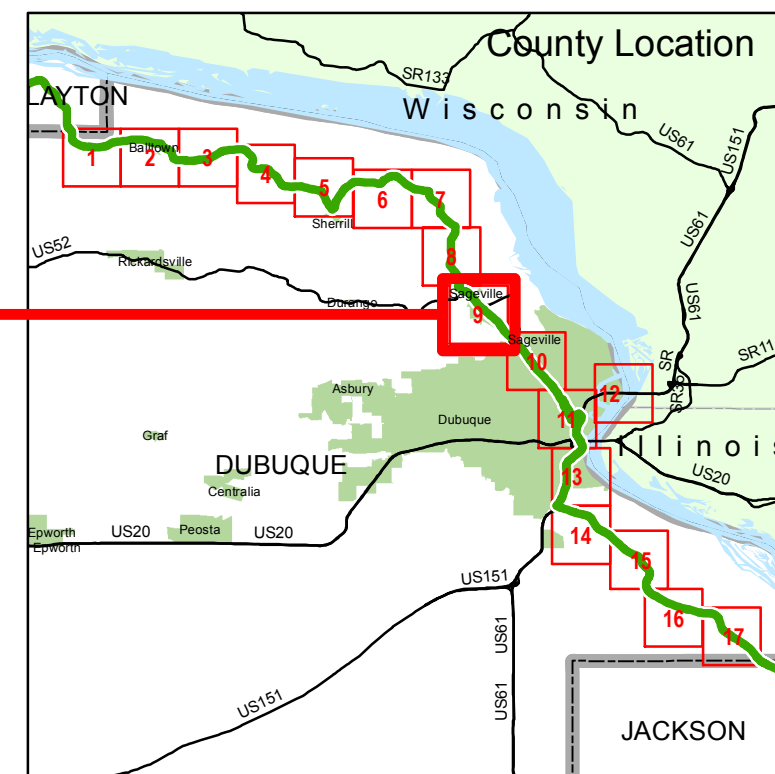
This document issued on: **Tuesday, August 26, 2014**

Field Review

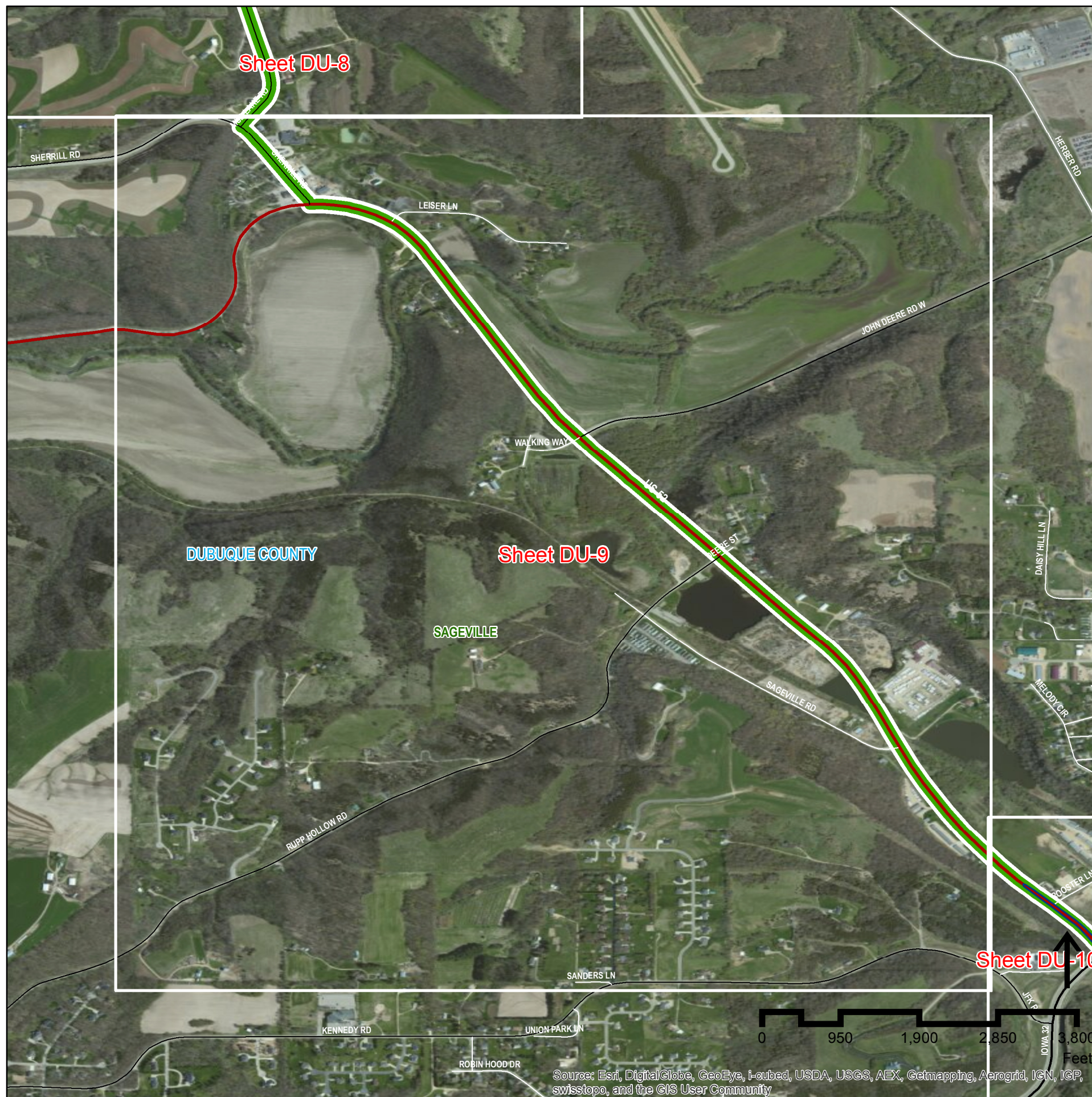
State Location



County Location



**Dubuque County
Sheet DU 9 of 17**



Source: Esri, DigitalGlobe, GeoEye, i-cubed, USDA, USGS, AEX, Getmapping, Aerogrid, IGN, IGP, swisstopo, and the GIS User Community



Iowa Great River Road National Scenic Byway

Designated Route Update

DAVID L. DAHLQUIST ASSOCIATES, LLC

Origin of geo-data: Iowa DOT, ESRI, Inc., and David L. Dahlquist Associates.

The opinions, findings, and conclusions expressed in this publication are those of the author and not necessarily those of the Iowa Department of Transportation or of the Federal Highway Administration.



Legend

Existing Designated Routing for the Iowa Great River Road

Recommended Extension of Iowa Great River Road to State Border

Recommended Realignment of Iowa Great River Road Route

Note:

See IA GRR Route Extension and Realignment Report 08-25-14 for notes

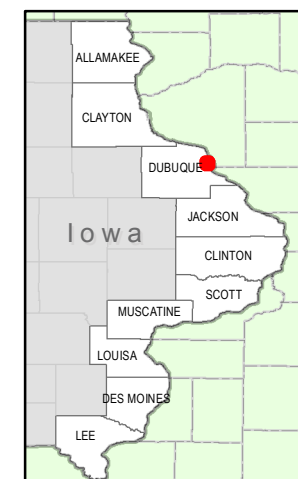
County Abbreviations

- AL Allamakee
- CY Clayton
- DU Dubuque
- JA Jackson
- CL Clinton
- SC Scott
- MU Muscatine
- LO Louisa
- DM Des Moines
- LE Lee

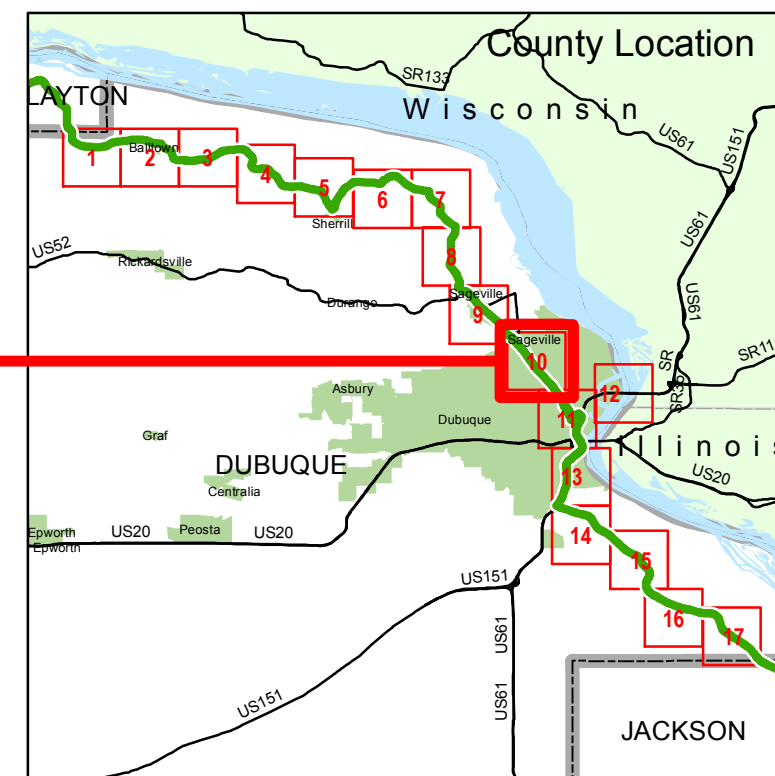
This document issued on: Tuesday, August 26, 2014

Field Review

State Location



County Location



Dubuque County Sheet DU 10 of 17



Source: Esri, DigitalGlobe, GeoEye, i-cubed, USDA, USGS, AEX, Getmapping, Aerogrid, IGN, IGP, MONTECASSINO, and the GIS User Community



Iowa Great River Road National Scenic Byway

Designated Route Update

DAVID L. DAHLQUIST ASSOCIATES, LLC

Origin of geo-data: Iowa DOT, ESRI, Inc., and David L. Dahlquist Associates.

The opinions, findings, and conclusions expressed in this publication are those of the author and not necessarily those of the Iowa Department of Transportation or of the Federal Highway Administration.



Legend

- Existing Designated Routing for the Iowa Great River Road
- Recommended Extension of Iowa Great River Road to State Border
- Recommended Realignment of Iowa Great River Road Route

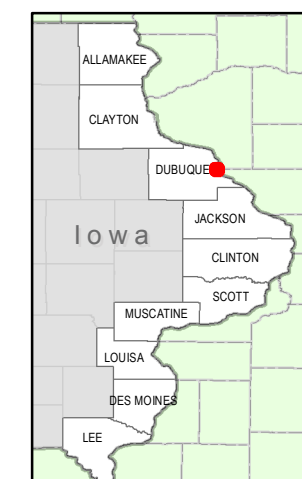
Note:

See IA GRR Route Extension and Realignment Report 08-25-14 for notes

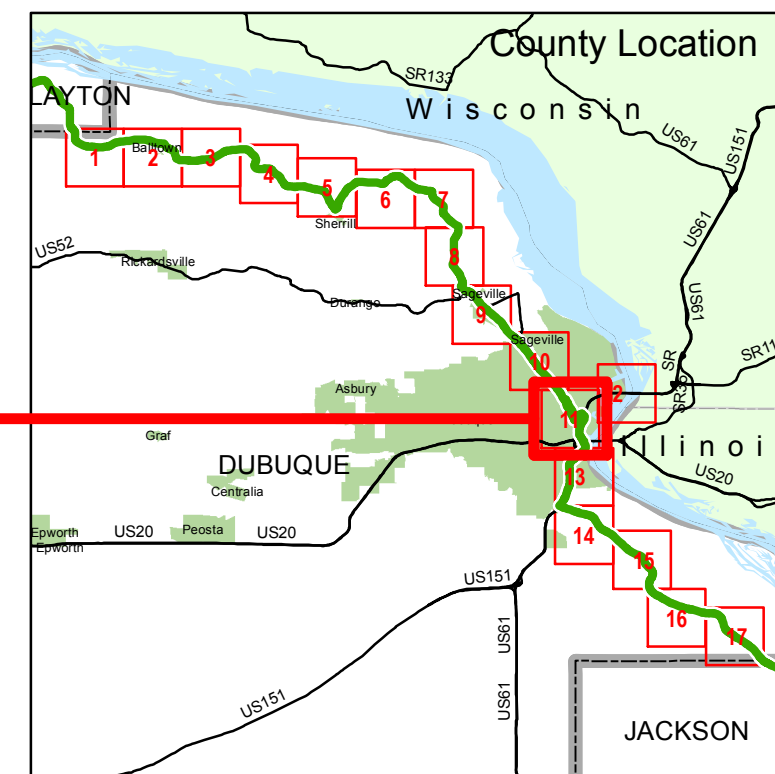
County Abbreviations

- AL Allamakee
- CY Clayton
- DU Dubuque
- JA Jackson
- CL Clinton
- SC Scott
- MU Muscatine
- LO Louisa
- DM Des Moines
- LE Lee

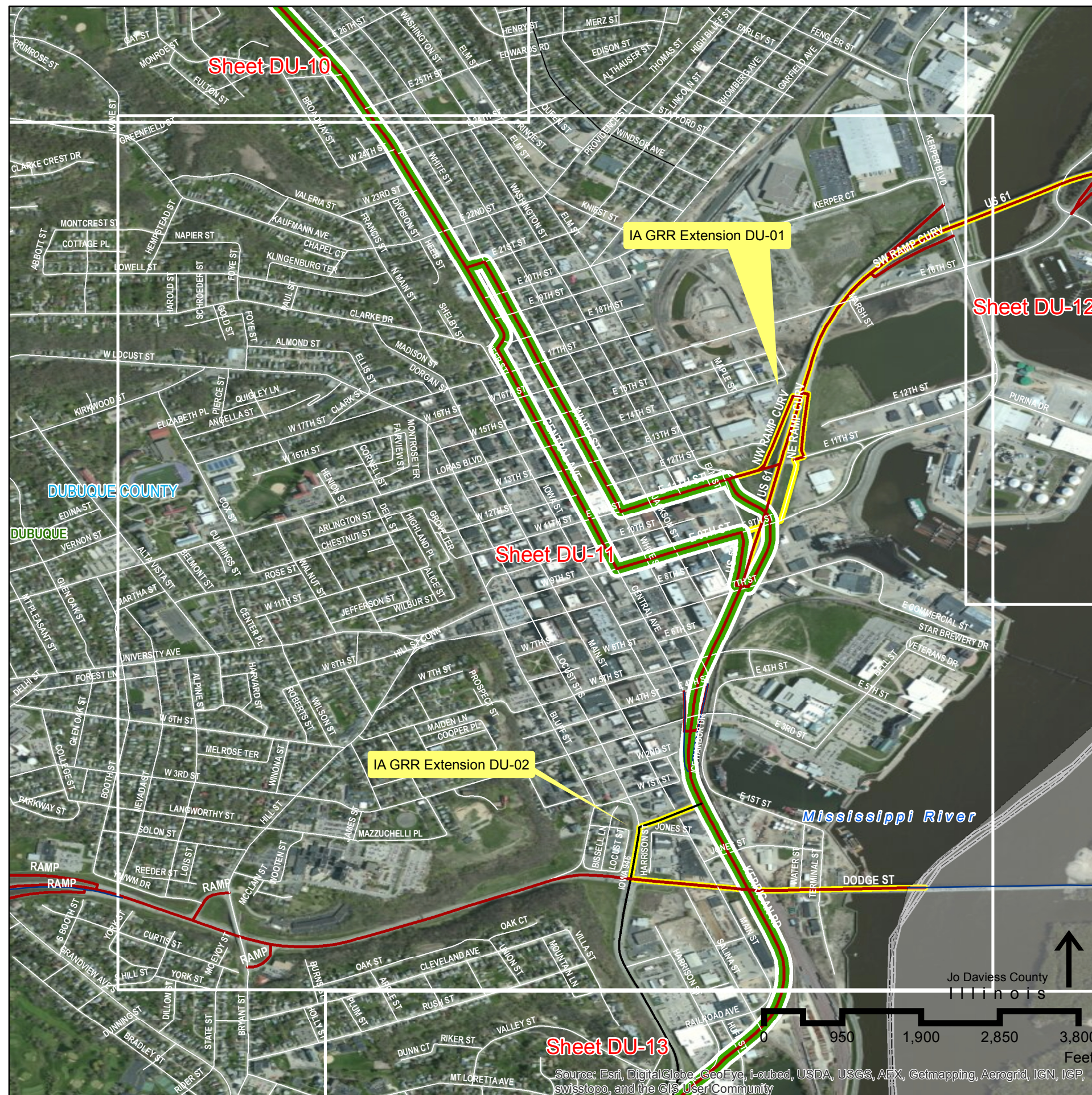
State Location



This document issued on:
Tuesday, August 26, 2014
Field Review



**Dubuque County
Sheet DU 11 of 17**



Source: Esri, DigitalGlobe, GeoEye, i-cubed, USDA, USGS, AEX, Getmapping, Aerogrid, IGN, ICP, swisstopo, and the GIS User Community



Iowa Great River Road National Scenic Byway

Designated Route Update

DAVID L. DAHLQUIST ASSOCIATES, LLC

Origin of geo-data: Iowa DOT, ESRI, Inc., and David L. Dahlquist Associates.

The opinions, findings, and conclusions expressed in this publication are those of the author and not necessarily those of the Iowa Department of Transportation or of the Federal Highway Administration.



Legend

- Existing Designated Routing for the Iowa Great River Road
- Recommended Extension of Iowa Great River Road to State Border
- Recommended Realignment of Iowa Great River Road Route

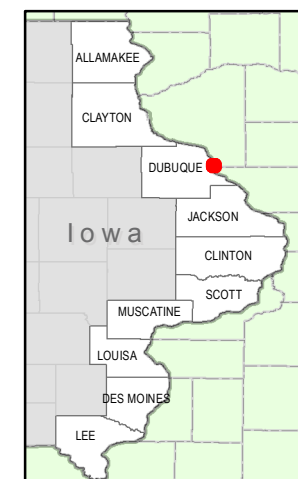
Note:

See IA GRR Route Extension and Realignment Report 08-25-14 for notes

County Abbreviations

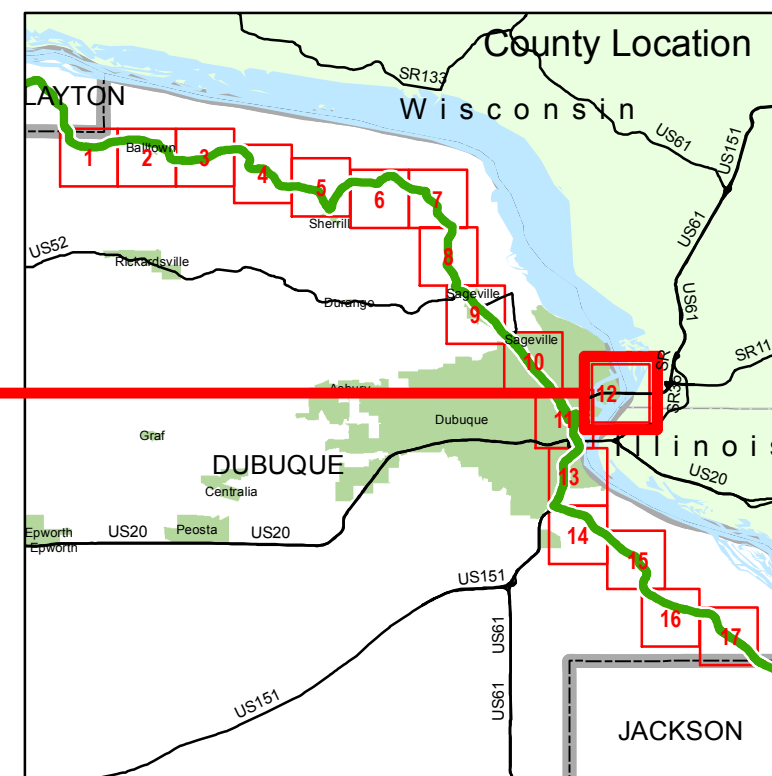
- AL Allamakee
- CY Clayton
- DU Dubuque
- JA Jackson
- CL Clinton
- SC Scott
- MU Muscatine
- LO Louisa
- DM Des Moines
- LE Lee

State Location

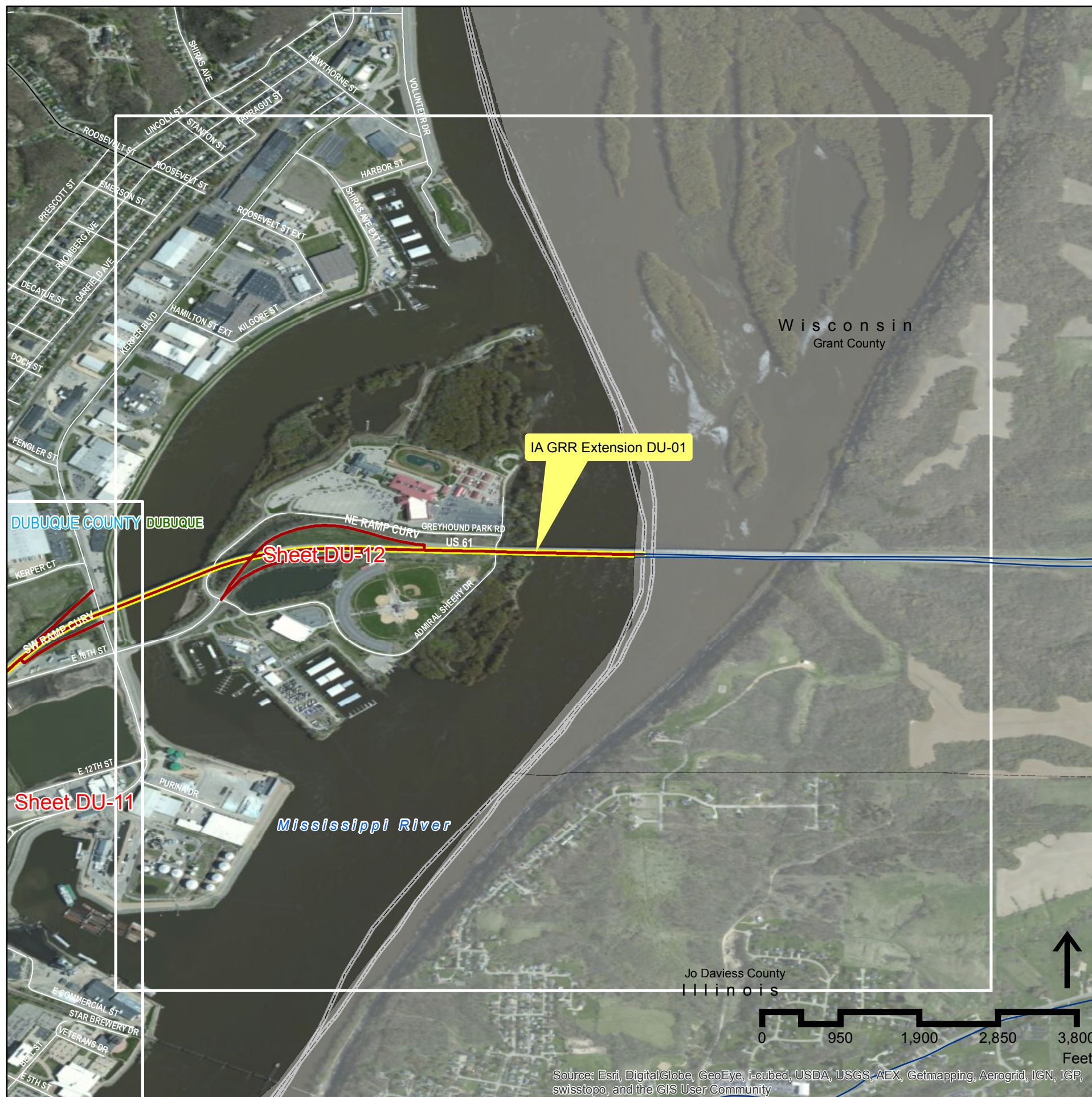


This document issued on: **Tuesday, August 26, 2014**
Field Review

County Location



Dubuque County Sheet DU 12 of 17



Source: Esri, DigitalGlobe, GeoEye, i-cubed, USDA, USGS, AEX, Getmapping, Aerogrid, IGN, IGP, swisstopo, and the GIS User Community



Source: Esri, DigitalGlobe, GeoEye, i-cubed, USDA, USGS, AEX, Getmapping, Aerogrid, IGN, IGP, swisstopo, and the GIS User Community



Iowa Great River Road National Scenic Byway

Designated Route Update

DAVID L. DAHLQUIST ASSOCIATES, LLC

Origin of geo-data: Iowa DOT, ESRI, Inc., and David L. Dahlquist Associates.

The opinions, findings, and conclusions expressed in this publication are those of the author and not necessarily those of the Iowa Department of Transportation or of the Federal Highway Administration.



Legend

- Existing Designated Routing for the Iowa Great River Road
- Recommended Extension of Iowa Great River Road to State Border
- Recommended Realignment of Iowa Great River Road Route

Note:

See IA GRR Route Extension and Realignment Report 08-25-14 for notes

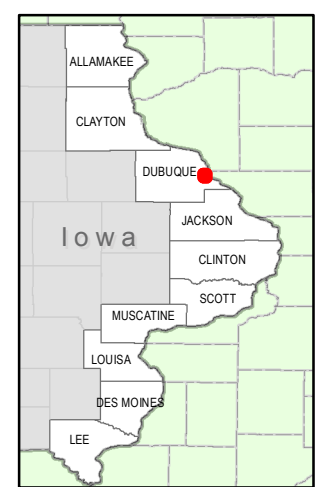
County Abbreviations

- AL Allamakee
- CY Clayton
- DU Dubuque
- JA Jackson
- CL Clinton
- SC Scott
- MU Muscatine
- LO Louisa
- DM Des Moines
- LE Lee

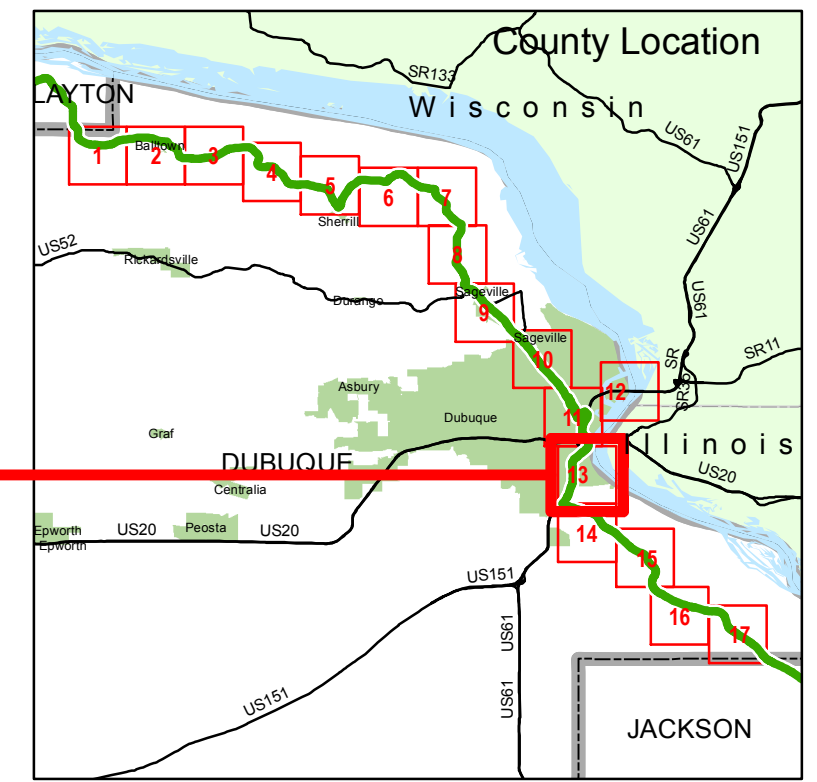
This document issued on:
Tuesday, August 26, 2014

Field Review

State Location



County Location



**Dubuque County
Sheet DU 13 of 17**



Iowa Great River Road National Scenic Byway Designated Route Update


DAVID L. DAHLQUIST ASSOCIATES, LLC


Origin of geo-data: Iowa DOT, ESRI, Inc., and David L. Dahlquist Associates.

The opinions, findings, and conclusions expressed in this publication are those of the author and not necessarily those of the Iowa Department of Transportation or of the Federal Highway Administration.



Legend

 Existing Designated Routing for the Iowa Great River Road

 Recommended Extension of Iowa Great River Road to State Border

 Recommended Realignment of Iowa Great River Road Route

Note:

See IA GRR Route Extension and Realignment Report 08-25-14 for notes

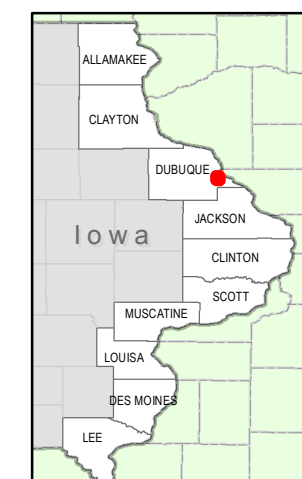
County Abbreviations

AL Allamakee
CY Clayton
DU Dubuque
JA Jackson
CL Clinton
SC Scott
MU Muscatine
LO Louisa
DM Des Moines
LE Lee

This document issued on:
Tuesday, August 26, 2014

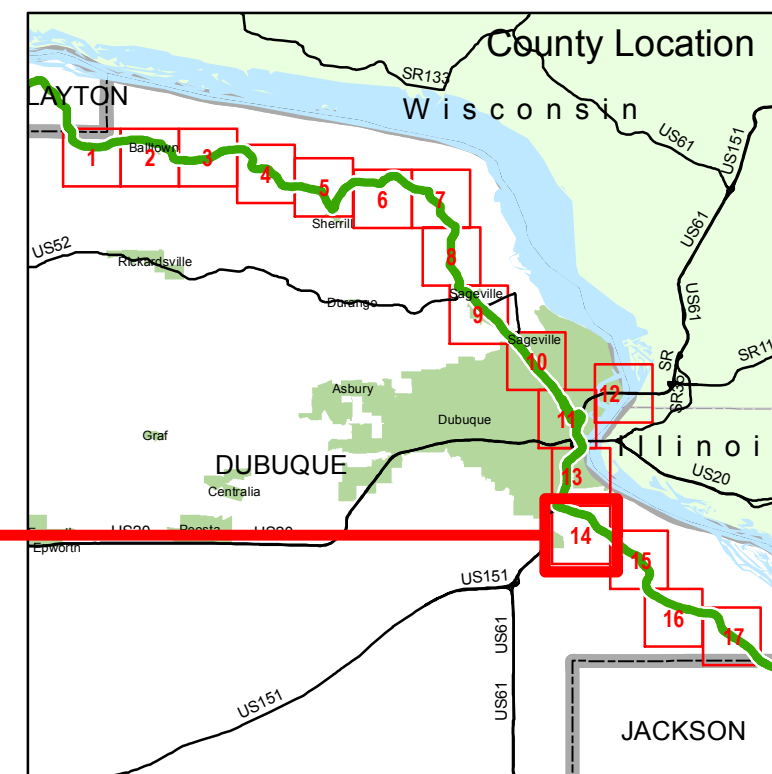
Field Review

State Location



Source: Esri, DigitalGlobe, GeoEye, i-cubed, USDA, USGS, AEX, Getmapping, Aerogrid, IGN, IGP, swisstopo, and the GIS User Community

County Location



**Dubuque County
Sheet DU 14 of 17**



Iowa Great River Road National Scenic Byway

Designated Route Update

DAVID L. DAHLQUIST ASSOCIATES, LLC

Origin of geo-data: Iowa DOT, ESRI, Inc., and David L. Dahlquist Associates.

The opinions, findings, and conclusions expressed in this publication are those of the author and not necessarily those of the Iowa Department of Transportation or of the Federal Highway Administration.



Legend

-  Existing Designated Routing for the Iowa Great River Road
-  Recommended Extension of Iowa Great River Road to State Border
-  Recommended Realignment of Iowa Great River Road Route

Note:

See IA GRR Route Extension and Realignment Report 08-25-14 for notes

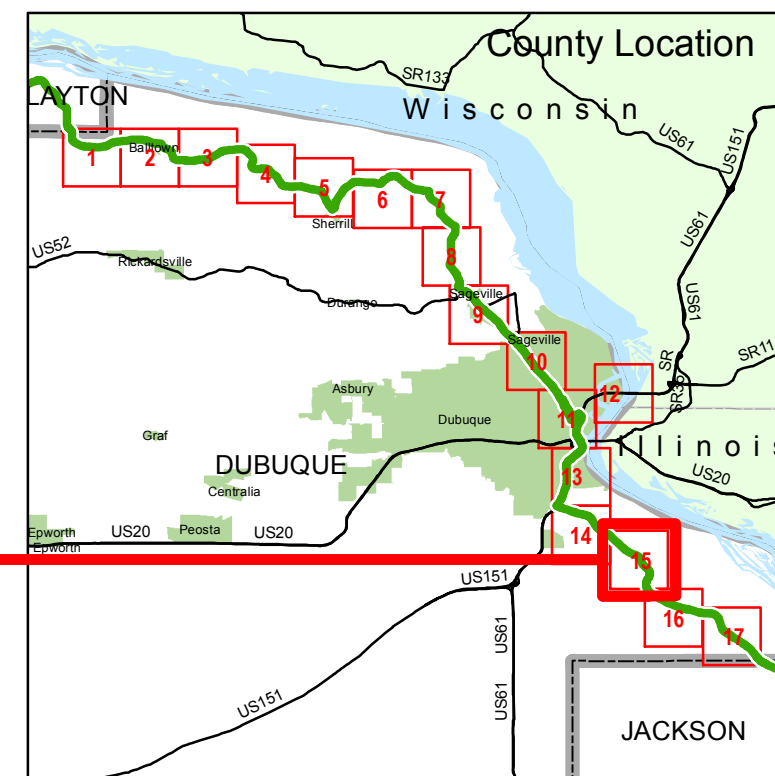
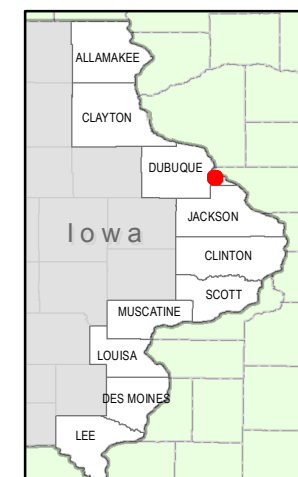
County Abbreviations

- AL Allamakee
- CY Clayton
- DU Dubuque
- JA Jackson
- CL Clinton
- SC Scott
- MU Muscatine
- LO Louisa
- DM Des Moines
- LE Lee

This document issued on:
Tuesday, August 26, 2014

Field Review

State Location



**Dubuque County
Sheet DU 15 of 17**

Source: Esri, DigitalGlobe, GeoEye, i-cubed, USDA, USGS, AEX, Getmapping, Aerogrid, IGN, IGP, swisstopo, and the GIS User Community



Iowa Great River Road National Scenic Byway

Designated Route Update

DAVID L. DAHLQUIST ASSOCIATES, LLC

Origin of geo-data: Iowa DOT, ESRI, Inc., and David L. Dahlquist Associates.

The opinions, findings, and conclusions expressed in this publication are those of the author and not necessarily those of the Iowa Department of Transportation or of the Federal Highway Administration.



Legend

- Existing Designated Routing for the Iowa Great River Road
- Recommended Extension of Iowa Great River Road to State Border
- Recommended Realignment of Iowa Great River Road Route

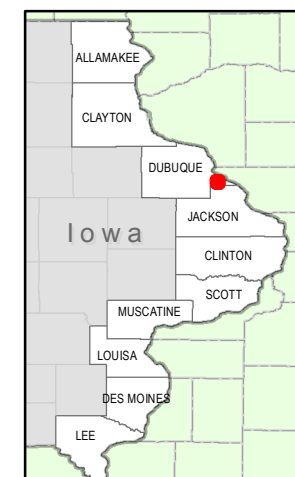
Note:

See IA GRR Route Extension and Realignment Report 08-25-14 for notes

County Abbreviations

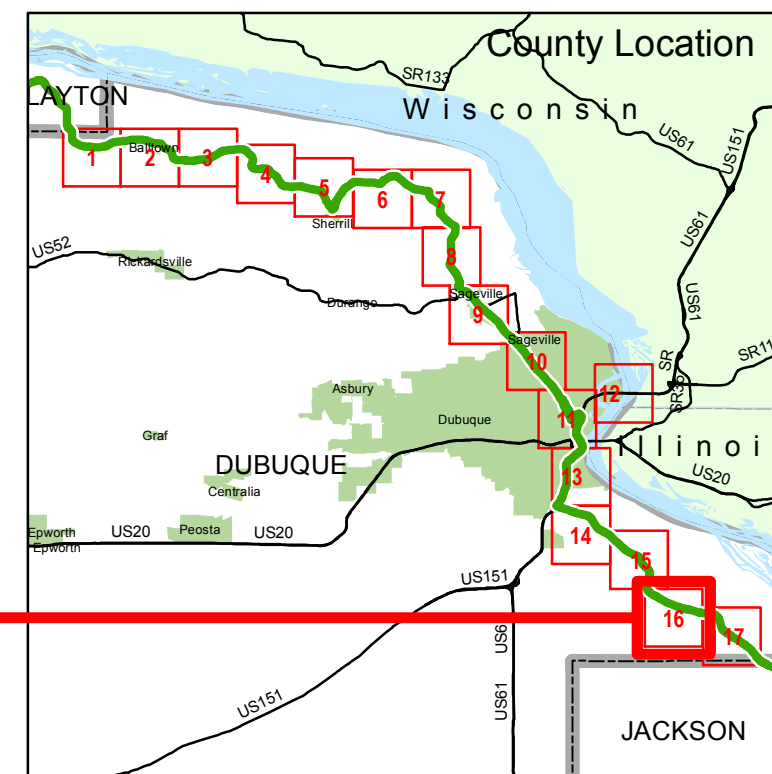
- AL Allamakee
- CY Clayton
- DU Dubuque
- JA Jackson
- CL Clinton
- SC Scott
- MU Muscatine
- LO Louisa
- DM Des Moines
- LE Lee

State Location



This document issued on:
Tuesday, August 26, 2014

Field Review



**Dubuque County
Sheet DU 16 of 17**





Iowa Great River Road National Scenic Byway

Designated Route Update

DAVID L. DAHLQUIST ASSOCIATES, LLC

Origin of geo-data: Iowa DOT, ESRI, Inc., and David L. Dahlquist Associates.

The opinions, findings, and conclusions expressed in this publication are those of the author and not necessarily those of the Iowa Department of Transportation or of the Federal Highway Administration.



Legend

-  Existing Designated Routing for the Iowa Great River Road
-  Recommended Extension of Iowa Great River Road to State Border
-  Recommended Realignment of Iowa Great River Road Route

Note:

See IA GRR Route Extension and Realignment Report 08-25-14 for notes

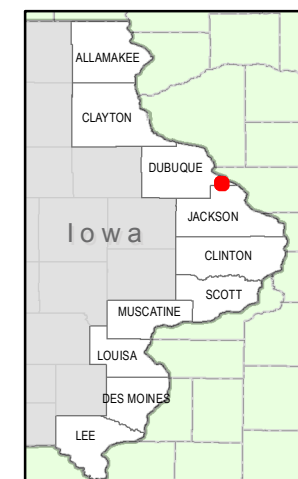
County Abbreviations

- AL Allamakee
- CY Clayton
- DU Dubuque
- JA Jackson
- CL Clinton
- SC Scott
- MU Muscatine
- LO Louisa
- DM Des Moines
- LE Lee

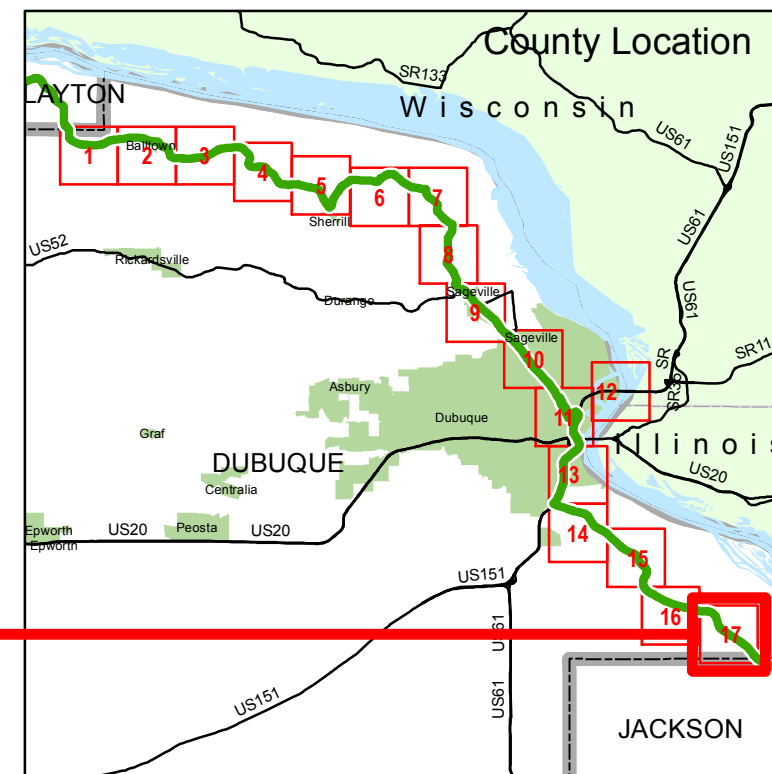
This document issued on: Tuesday, August 26, 2014

Field Review

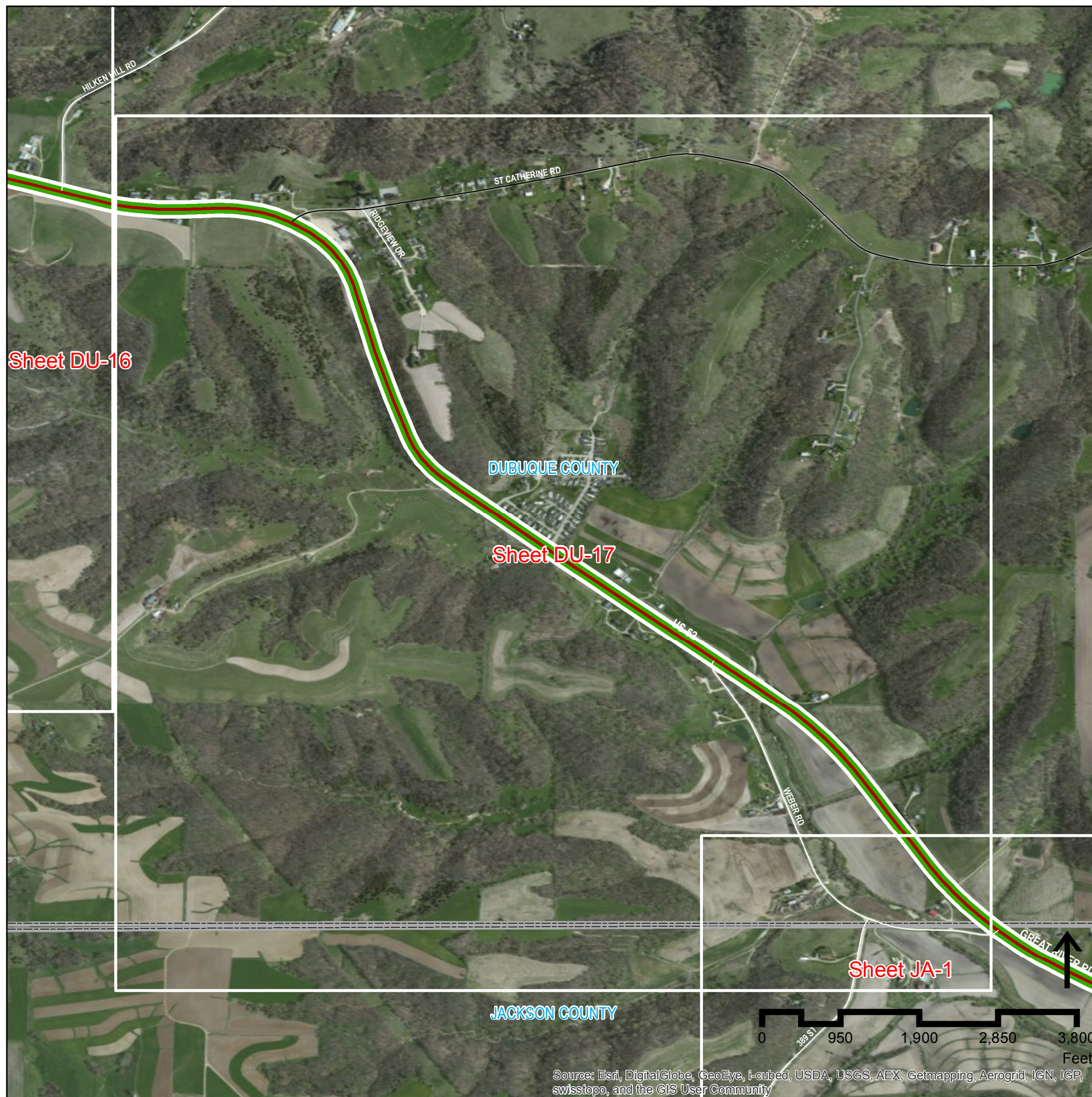
State Location



County Location



Dubuque County Sheet DU 17 of 17



Source: Esri, DigitalGlobe, GeoEye, i-cubed, USDA, USGS, AEX, Getmapping, Aerogrid, IGN, IGP, swisstopo, and the GIS User Community